



Linda S. Watson  
Chief Executive  
Officer



Florida  
Transportation  
Commission

*accountability*

*integrity*

*innovation*

*teamwork*

*community*

*excellence*



# Presentation Overview

- Describe Transit System
  - Governance
  - Policies
  - Budget
  - Value
- State-wide Implications
- The Future



# The State of LYNX

- 2500 sq mile Service Area
- Size of the State of Delaware





# LYNX Matters to Everyone

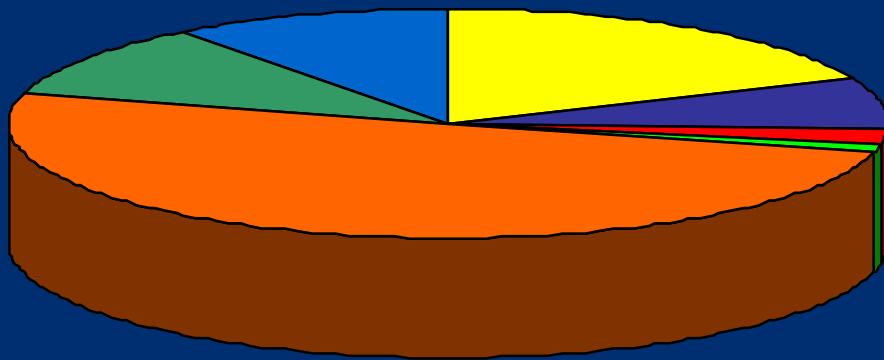
People ride  
the Bus  
for two reasons:



- ✓ To make money
- ✓ To spend money



# \$107 million Operating Budget



- Customer Fares
- Contract Services
- Advertising
- Interest & Other Income
- Local
- State
- Federal





# Changes at LYNX

- 2003 - Under New Board Management
- 2004 – New CEO and New Management Team



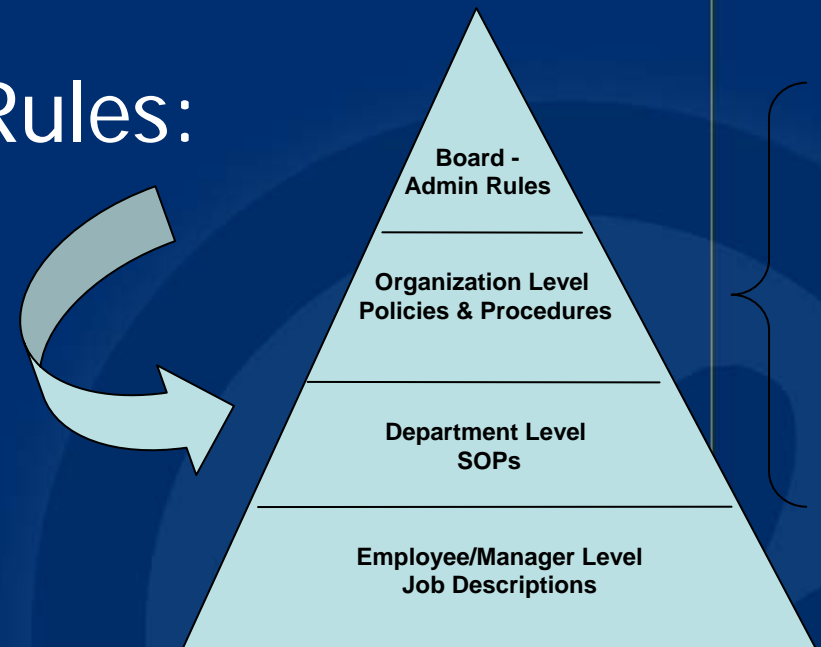
# Making Improvements

- Audited major departments
  - Procurement
  - Maintenance
  - Safety
  - Transportation
- Action plan developed



# Gaining Credibility

- Updated Administrative Rules:
  - Rule #4 Procurement
  - Rule #9 Ethics Policy and Personnel Rules
  - Rule # 8 Operations, Planning, Charter and Community Bus Service Policy





# Running It Like A Business

- Monthly financial and performance reports to the Board
- Unqualified audit & no management letter
- “No Deficiencies” on FTA Triennial Audit
- Privatization study of LYMMO and competitively bid service



# Bus System in Crisis

- LYNX Average Trip:  
**1 hour 23 minutes**
- Average wait between buses  
is **60 and 90 minutes**
- 5, 000 bus stops fewer than **400** shelters
- **Half** the bus fleet needs to be **replaced** -

5 Buses	Over 700,000 Miles
72 Buses	Over 600,000 Miles
35 Buses	Over 500,000 Miles



# Not Enough Buses to Serve

## System Comparison

SYSTEM	# OF BUSES	SERVICE AREA
LYNX	238	2,500 sq. mi.
Charlotte	368	445 sq. mi.
Las Vegas	383	280 sq. mi.
Miami	506	285 sq. mi.
Phoenix	709	799 sq. mi.



# Reliability Problems



- LYNX on-time performance has sunk to 74 percent...
  - Increased congestion
  - Increased ridership
  - Not enough buses



# 19 New Buses to Achieve On-Time Performance







# LYNX IS IMPORTANT...

## WORKFORCE

- 75% of LYNX riders are going to work
- Last year, our region added 100,000 jobs... 40% paid less than \$27,000 annually
- 56% could not get to work without LYNX







# LYNX IS IMPORTANT...

## SENIORS

**Who will provide transportation to our aging family members when they can no longer drive?**

**...LYNX enables our loved ones to remain independent.**





# LYNX IS IMPORTANT...

## GLOBAL COMPETITION



**Businesses evaluate transit  
options carefully before relocating.**

**...reliable transit is critical to  
a mobile workforce.**





# LYNX IS IMPORTANT...

## GAS PRICES

You're already wasting  
58 hours each year in  
traffic.

...at \$3 a gallon, what's  
that costing you?

Regular	327 <sup>9</sup> / <sub>10</sub>
Plus	337 <sup>9</sup> / <sub>10</sub>
V-Power <sup>®</sup> Gasoline	347 <sup>9</sup> / <sub>10</sub>
Gasoline	



# The Problem with Being Great



Someone Moves to  
Central Florida  
**Every 10 minutes**

**...5.3 Million Residents by 2030**



# Making Tough Choices...

## CROSSROADS

**Central Florida is in the same position Los Angeles was in 1956...**

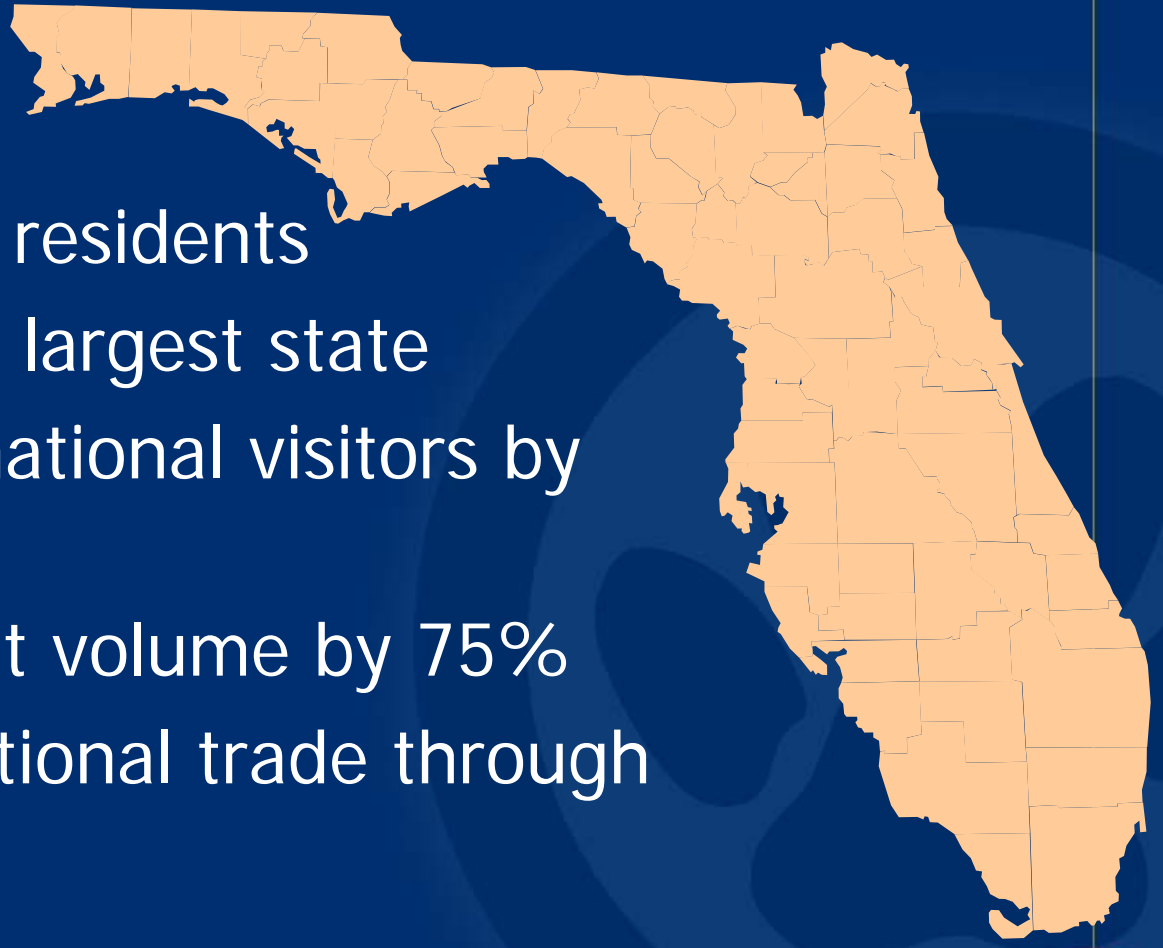
**...making the tough choices associated with growth and development can save us.**





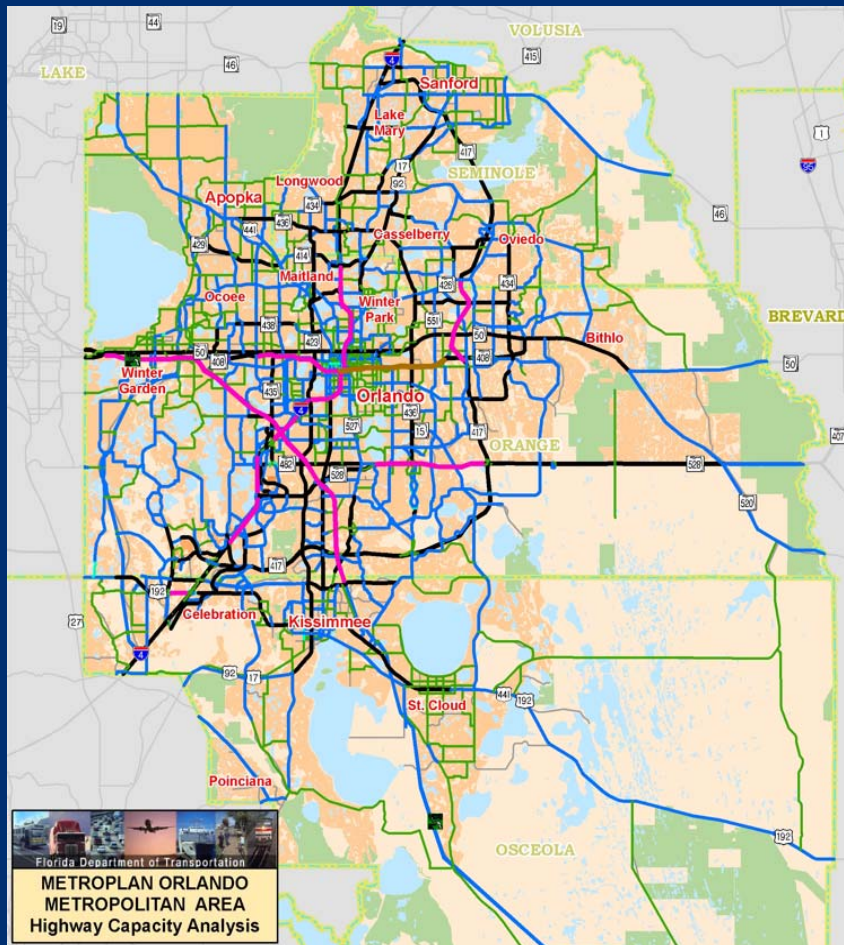
# In 25 Years Florida Will...

- Add 8+ million residents
- Pass NY as 3rd largest state
- Increase international visitors by 75%
- Increase freight volume by 75%
- Double international trade through state

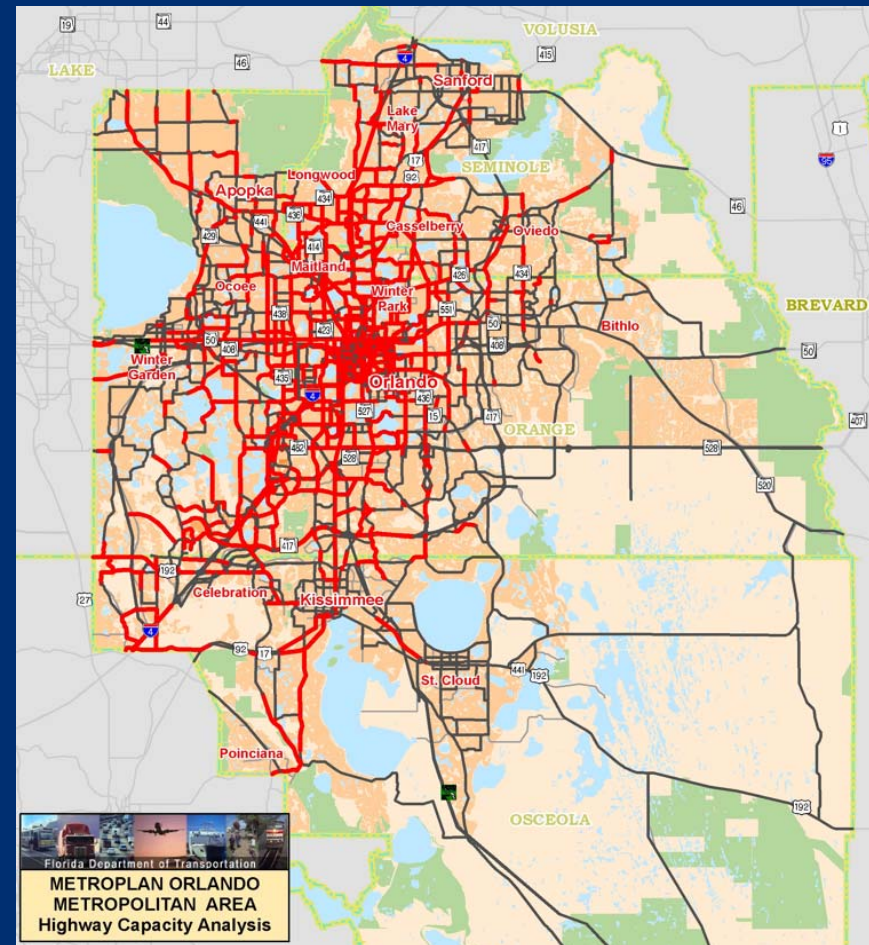




# Destined to Fail



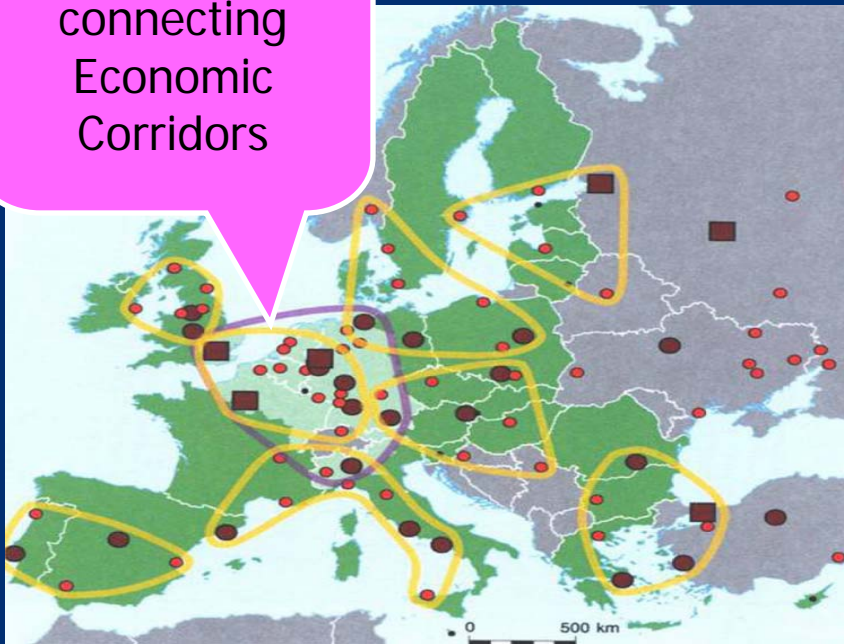
Current



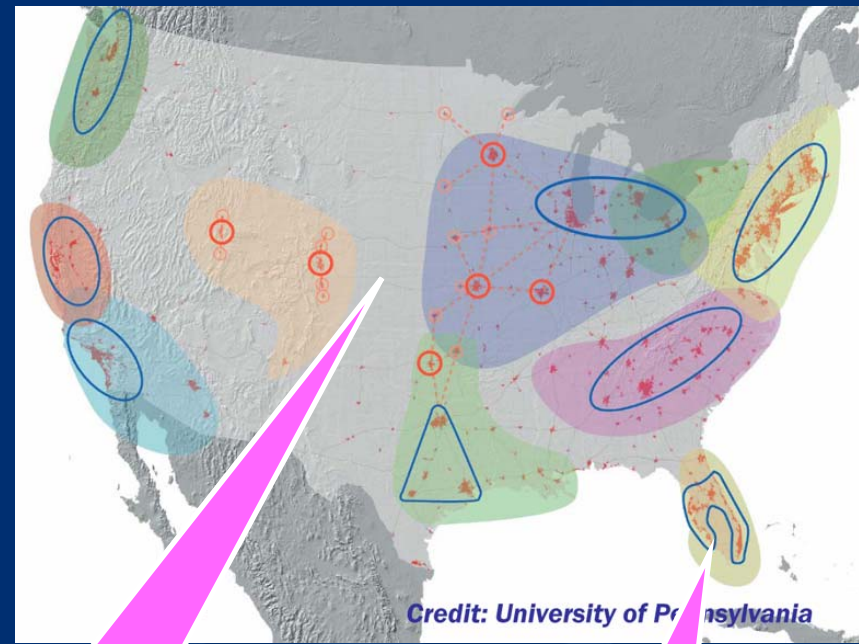
Projected 2025?

# Competing Globally

Europe is  
connecting  
Economic  
Corridors



U.S. Economic  
Corridors NOT  
established



Florida  
Mega-  
Region



# America Supports More Transit

- **80%** believe we should have more transit
- **76%** support use of public funds on transit





# How Will Florida Move Our Population & Economy

Tomorrow

## When Our Highways Are Failing

Today?



# Non-Highway Solutions

- Expand Fixed Route Bus
- Bus Rapid Transit (BRT)
- Light Rail
- Commuter Rail
- Inter-City Rail
- Passenger Ferry



# Bus Rapid Transit

Intermediate  
strategy for  
higher density

Stations  
resemble rail  
stations  
more than bus  
stops



*LYMMO was the first fully functional  
Bus Rapid Transit (BRT)  
project in the United States*





# Light Rail





# Commuter Rail



- Carry up to 300 passengers per train
- Speeds between 65-79 mph
- Moves **one lane** of peak Highway traffic
- Uses new or existing tracks
- Focuses growth in urban areas
- Operates during “peak” commuter times





# Inter-City Rail



- Encourages connectivity **between** cities
- City-to-city travel at **120 mph** +
- Moves **6 lanes** of peak Highway traffic
- Trains on tracks separated from cars
- Would serve 5 major urban areas of Florida
- Substitutes for short air flights



# Passenger Ferry



Express in service between Skagway and Haines in Alaska, USA

- Used extensively in waterside cities and islands
- Much lower capital costs than bridges or tunnels
- Washington State has most extensive system in U.S.



**SO WHAT DO  
WE DO NEXT?**





# Securing Dedicated Funding...



- Reduces the heavy responsibilities on funding partners
- Key to Budget Planning
- Enables Service Expansion





# Dedicated Funding Options

Revenue Adequacy	Revenue Generation	Revenue Growth
<b>\$2 Rental Car Surcharge</b>	• \$40 million (8 million for LYNX)	
<b>9th Cent Gas Tax</b>	• \$5.5 Million (Orange Co only)	<ul style="list-style-type: none"><li>• Orange only</li><li>• Not indexed for inflation</li><li>• Revenues fluctuate w economy, tourism, fuel prices/efficiency</li></ul>
<b>Local Option Gas Tax</b>	<ul style="list-style-type: none"><li>• \$25.6 Million: Orange Co</li><li>• \$ 8.4 Million: Seminole Co</li><li>• \$ 5.6 Million: Osceola Co</li></ul>	<ul style="list-style-type: none"><li>• Not indexed for inflation</li><li>• Revenues fluctuate w economy, tourism, fuel prices/efficiency</li></ul>
<b>Infrastructure Sales Tax</b>	• \$263.4 Million: Orange Co (1% tax)	<ul style="list-style-type: none"><li>• Orange only</li><li>• May be used for capital only</li><li>• Tax capped for certain items</li><li>• Keep pace w inflation</li></ul>
<b>Transit Sales Tax</b>	<ul style="list-style-type: none"><li>• \$263.4 Million: Orange Co</li><li>• \$ 54.4 Million: Seminole Co</li><li>• \$ 29.5 Million: Osceola Co</li></ul>	<ul style="list-style-type: none"><li>• May be used for capital and O&amp;M</li><li>• No tax caps</li><li>• Keep pace w inflation</li></ul>





# Prevent another multi-million dollar “diversion” from the State Transportation Trust Fund

- \$200 million has already been raided and diverted from the State’s Transportation Trust Fund.
- Transportation Trust funds do not come from general revenue, but are collected from transportation “user fees” -- gasoline taxes and tags.
- These are taxes paid by the traveling public in Florida for a very specific purpose -- transportation maintenance and improvements.
- Fully fund transportation so FDOT can implement its adopted work program



# The Time Is Now!



**If we wait much longer...  
we'll wait much longer.**





# Thank You



**Don't let  
traffic bury us.**

