



A large, stylized sunburst logo in a lighter shade of blue, centered on the slide. It consists of a central circle with numerous horizontal rays of varying lengths extending outwards.

# **Florida Transportation Commission**

**May 23, 2006**

# **By The Numbers**

## **Orlando International Airport**

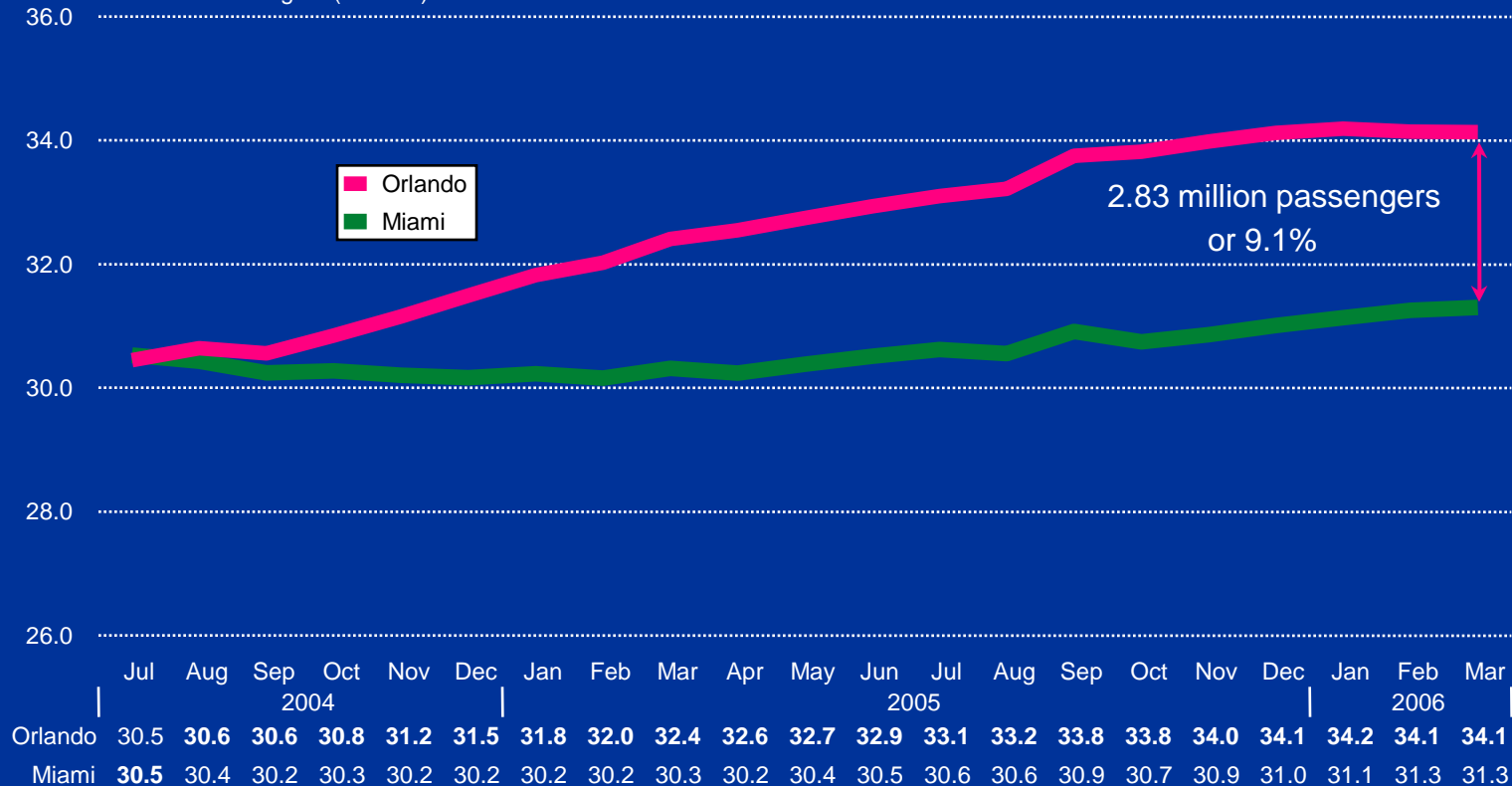
- **13,300 Airport Acreage**
- **34.1 Million Annual Passengers (Mar 2006)**
- **93,500 Average Daily Passengers**
- **4<sup>th</sup> Busiest Domestic O&D Airport**
- **12<sup>th</sup> Busiest Passenger Airport in the Nation**
- **21<sup>st</sup> Busiest Passenger Airport in the World**



# Rolling 12-month passenger traffic Orlando International v Miami

July 2004 - March 2006

Annual Passengers (Millions)



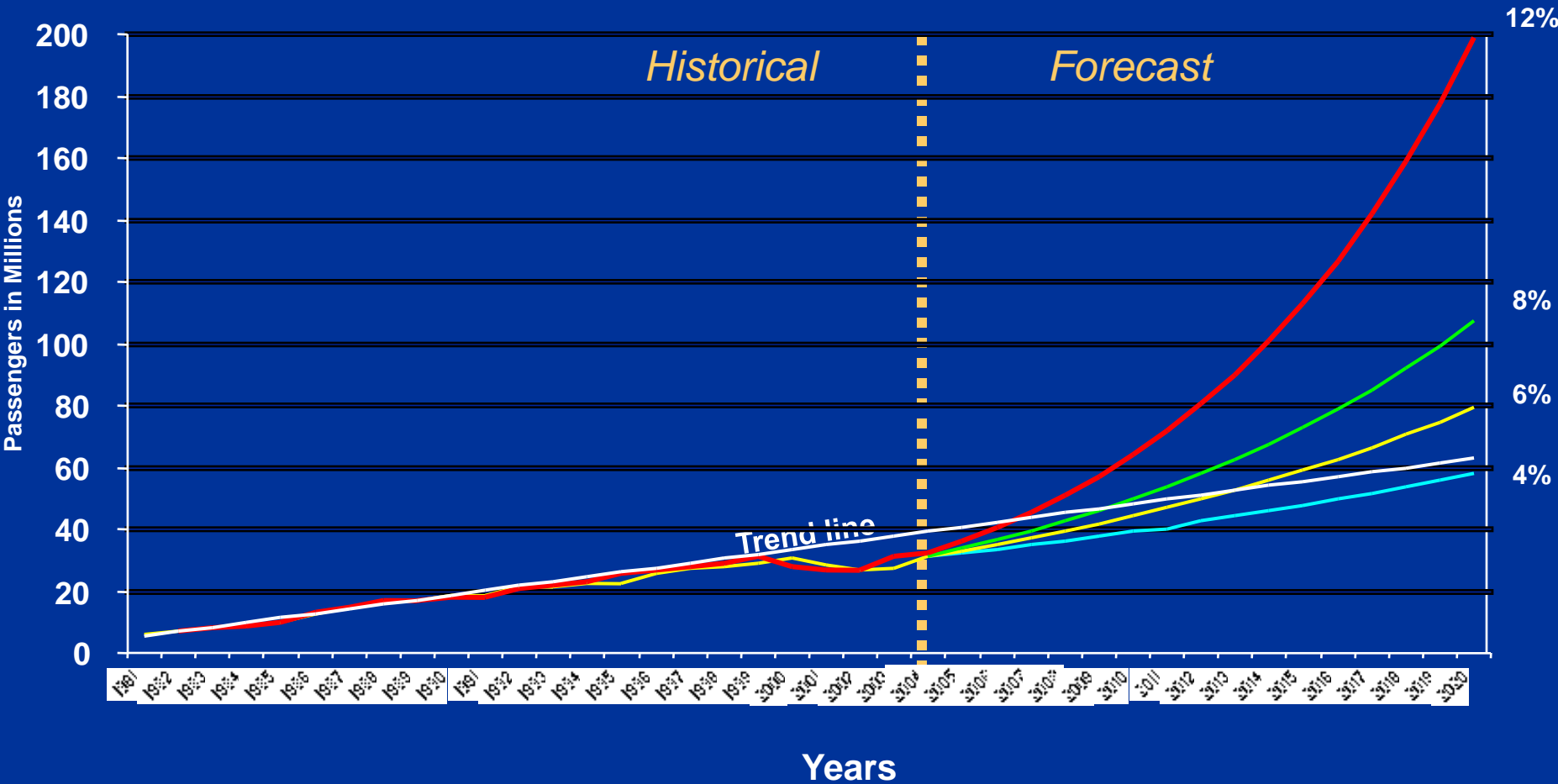
Source: Aviation Authority records (Orlando) and Miami International Airport.

Contact: GOAA Marketing



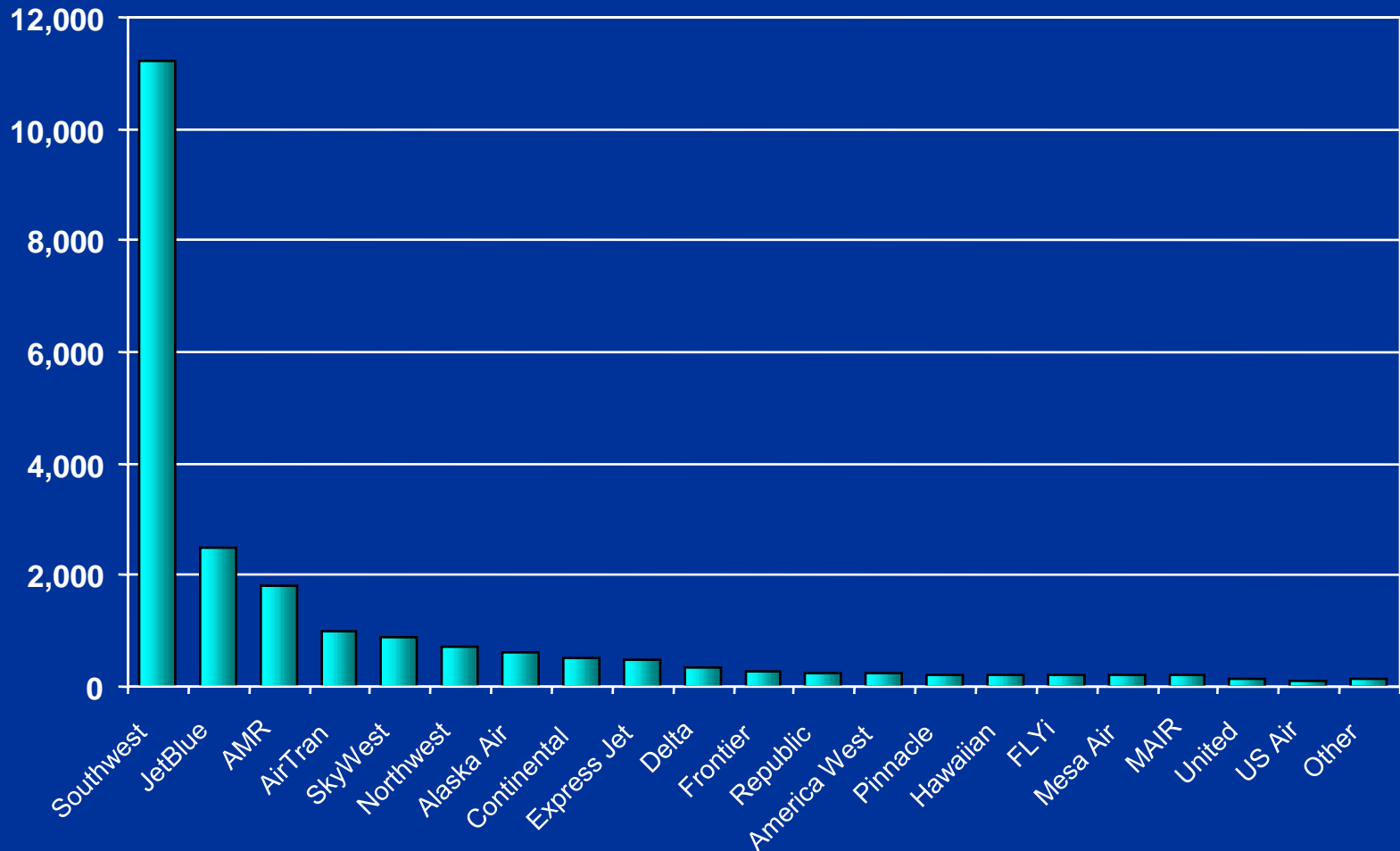
**GREATER ORLANDO  
AVIATION AUTHORITY**

# Evaluation of Alternate Growth Rates



# U.S. Airline Market Capitalization

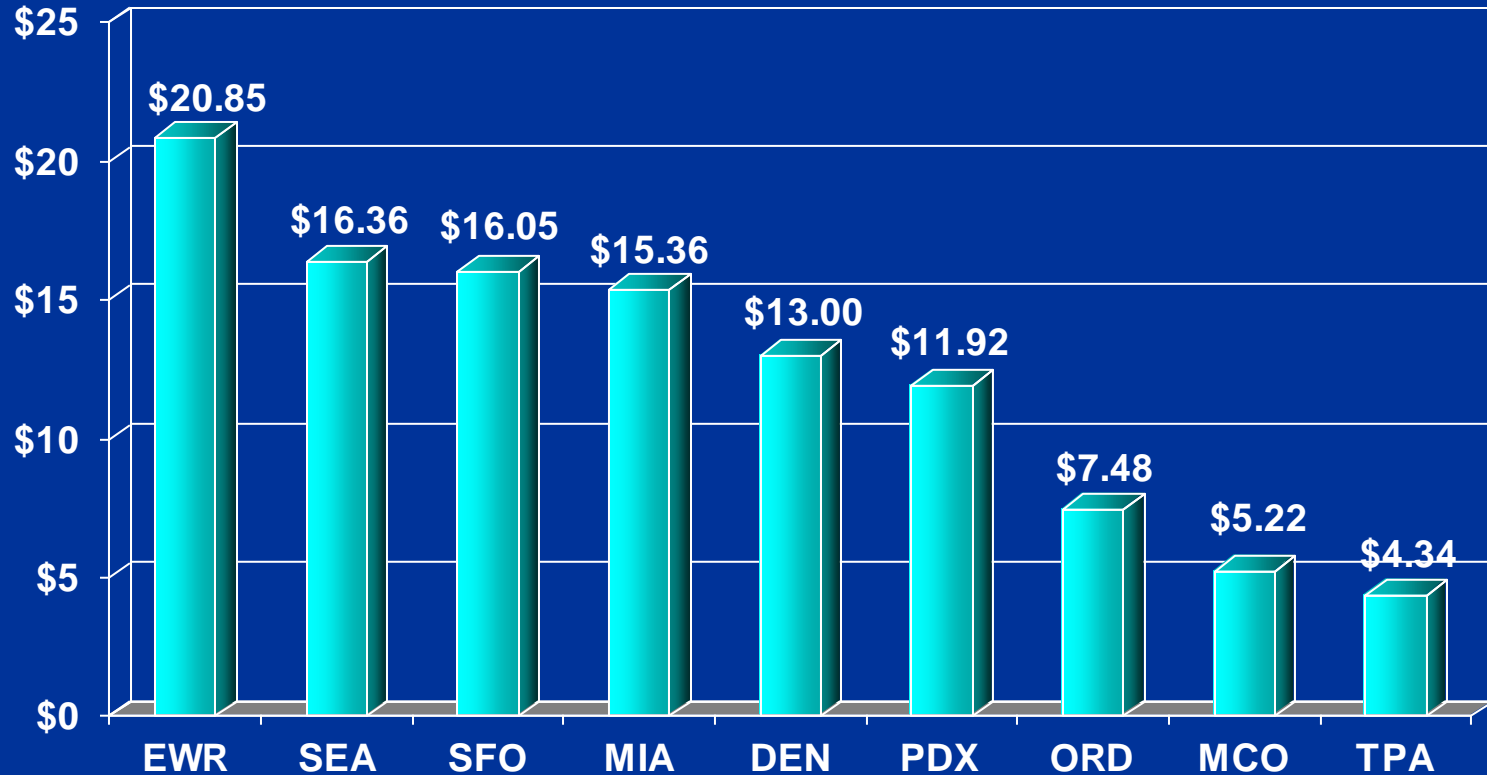
In millions



**GREATER ORLANDO  
AVIATION AUTHORITY**

# Airport Costs per Enplaned Passenger

Airport Comparisons for 2004

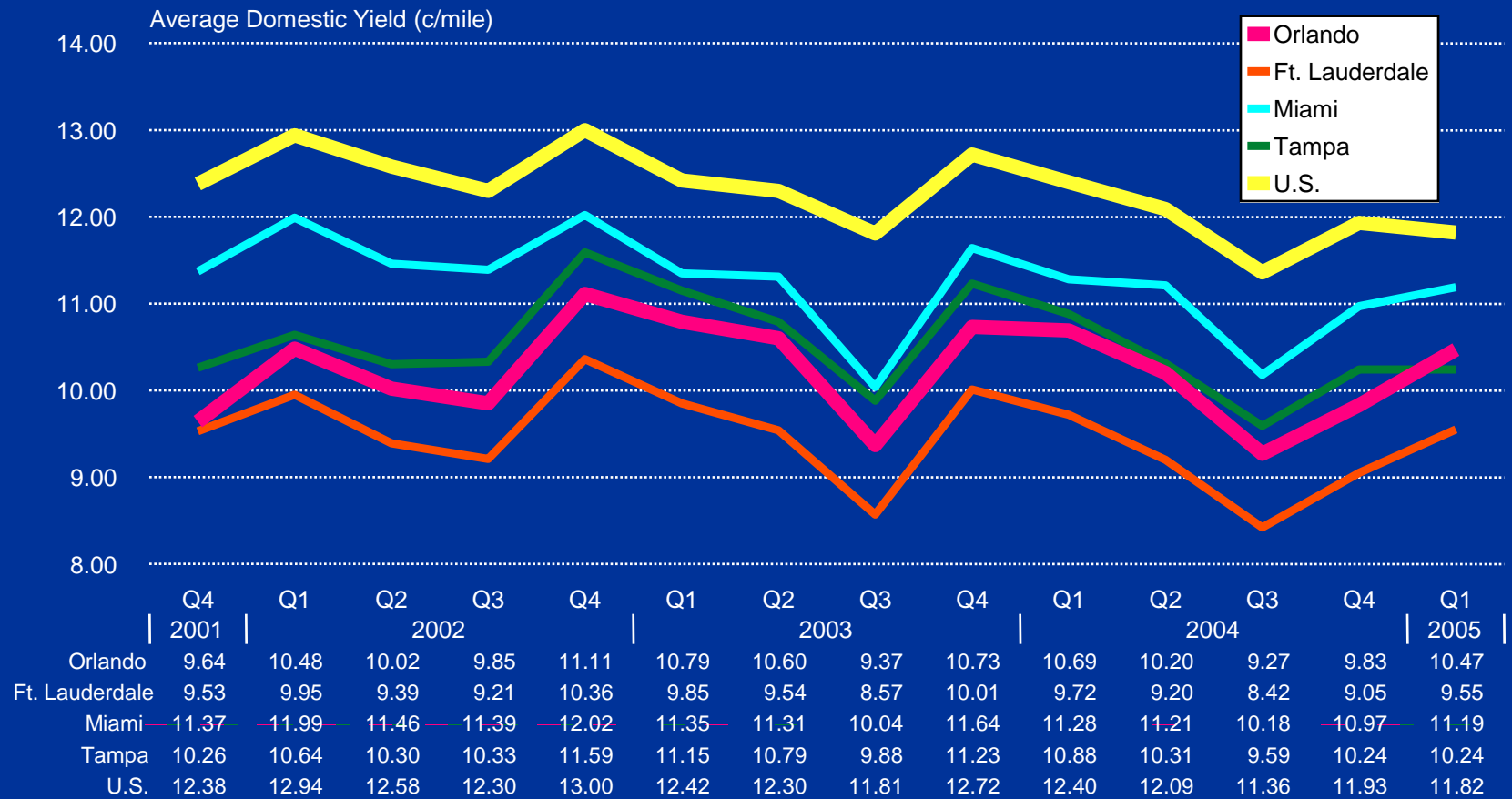


Source: John F. Brown Company



**GREATER ORLANDO  
AVIATION AUTHORITY**

# Domestic Yield at Florida Airports



Source: U.S. DOT O&D database (Seabury Airline Planning Group APGdat).



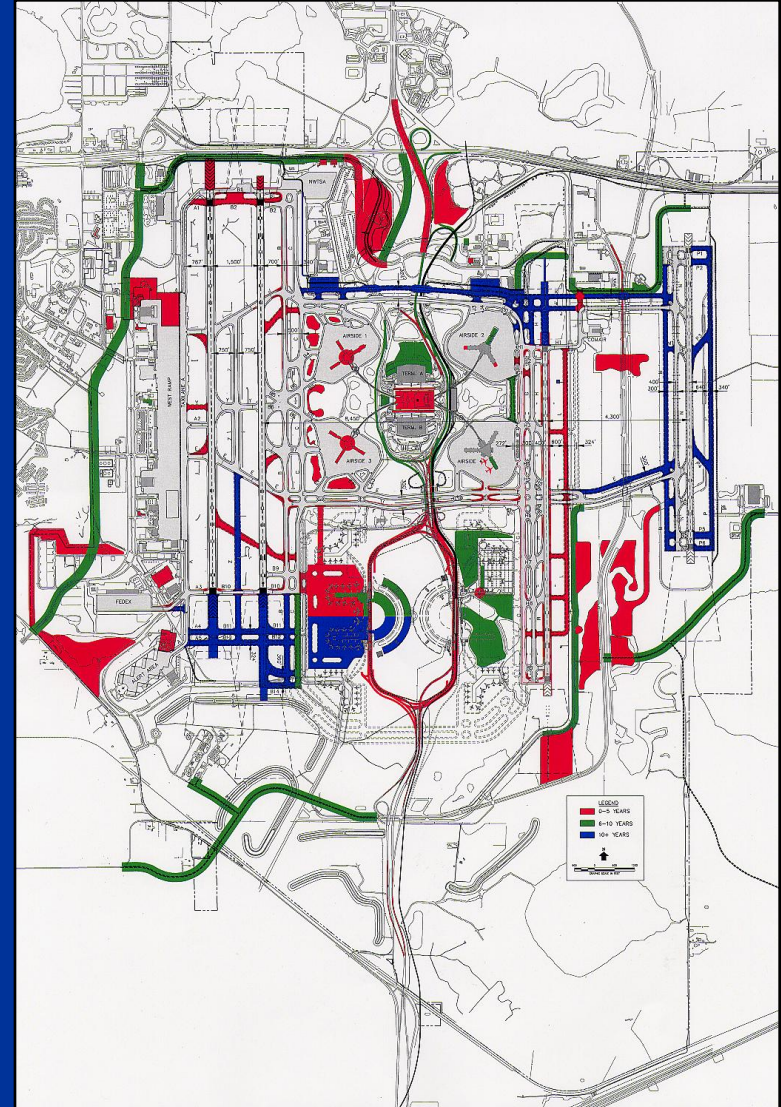
**GREATER ORLANDO  
AVIATION AUTHORITY**



# Summary of CIP

**\$ 3.3 Billion over 15 years**

- **\$ 2.4 Billion - Terminal Projects**
- **\$ 400 Million - Airfield Projects**
- **\$ 235 Million - Roadway & Parking Projects**
- **\$ 125 Million - Other Projects**
- **Includes \$200 Million in Asset Preservation/R&R Projects**



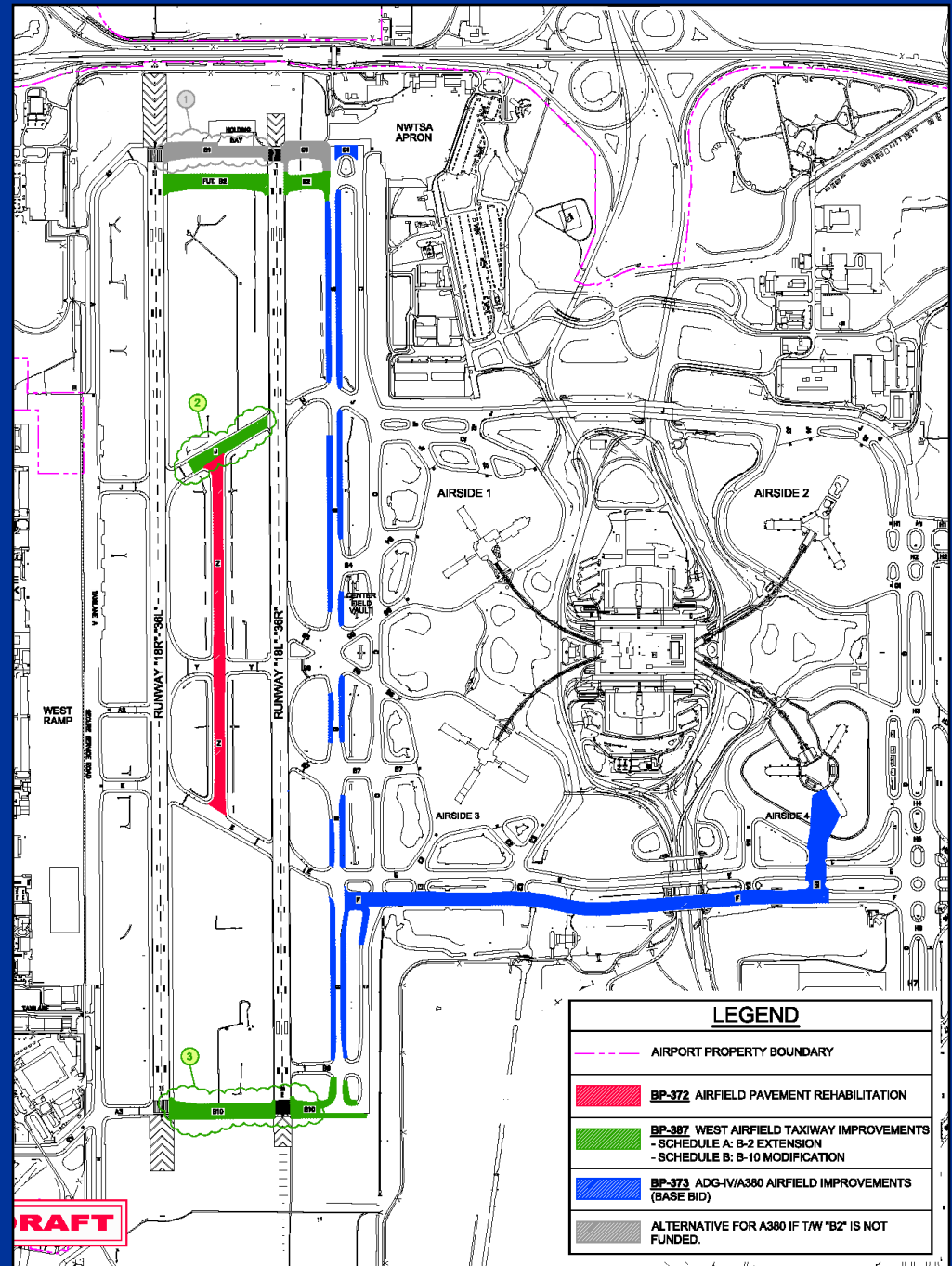
# Airbus 380



# A-380 Proposed Improvements



GREATER ORLANDO  
AVIATION AUTHORITY



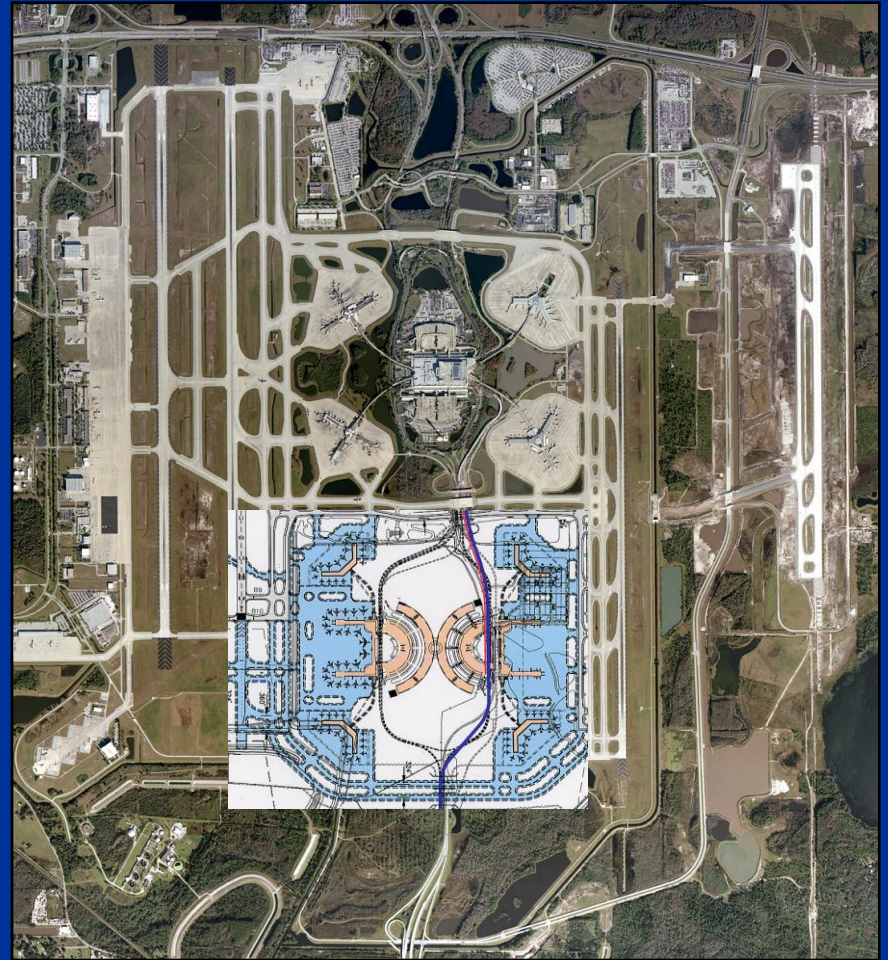
## LEGEND

- AIRPORT PROPERTY BOUNDARY
- BP-372 AIRFIELD PAVEMENT REHABILITATION
- BP-387 WEST AIRFIELD TAXIWAY IMPROVEMENTS  
- SCHEDULE A: B-2 EXTENSION  
- SCHEDULE B: B-10 MODIFICATION
- BP-373 ADG-IV/A380 AIRFIELD IMPROVEMENTS (BASE BID)
- ALTERNATIVE FOR A380 IF T/W "B2" IS NOT FUNDED.

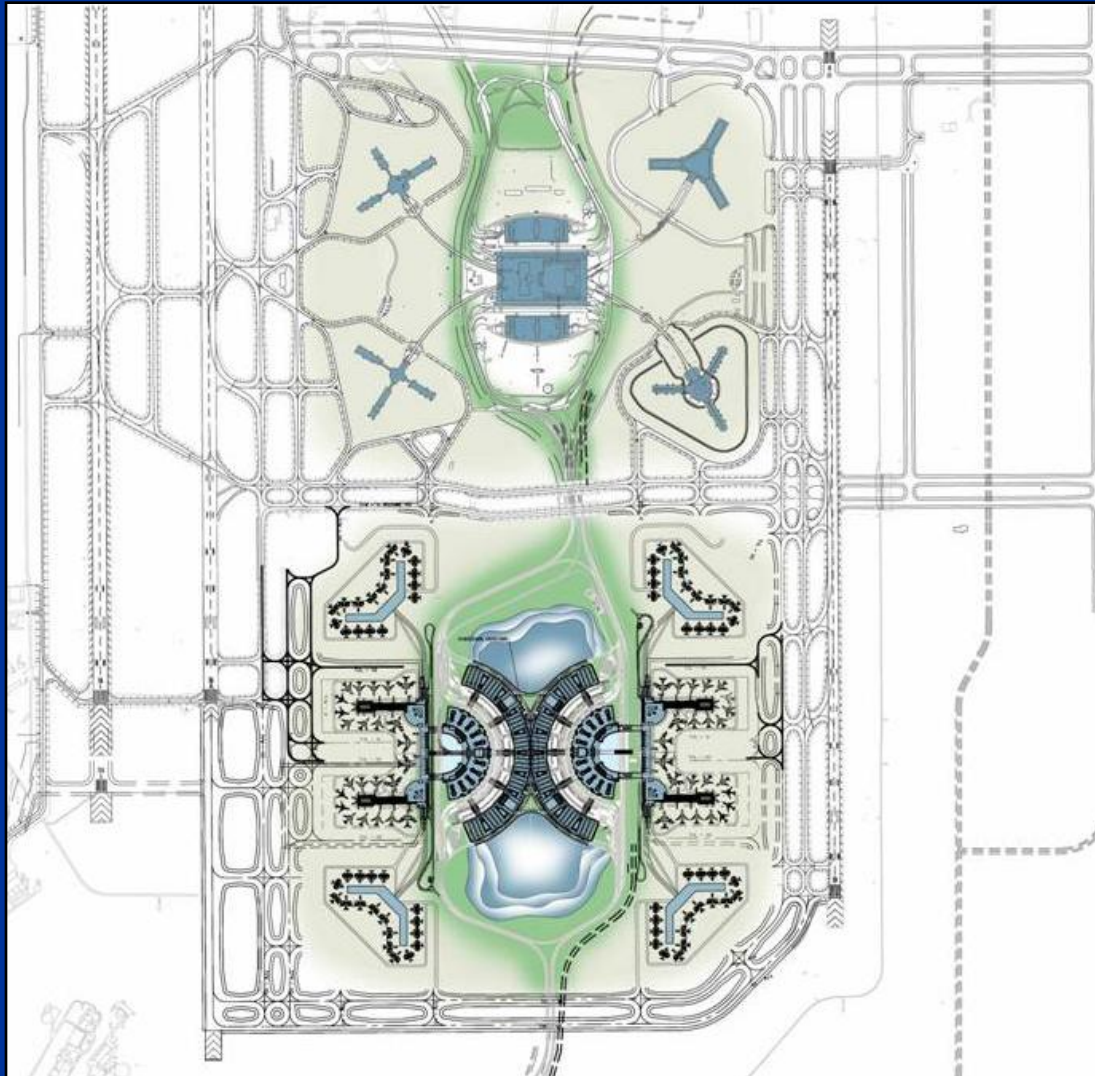


# South Terminal

- **Demand Driven**
- **Design in Progress**
- **Site Work and Infrastructure Construction Continues**



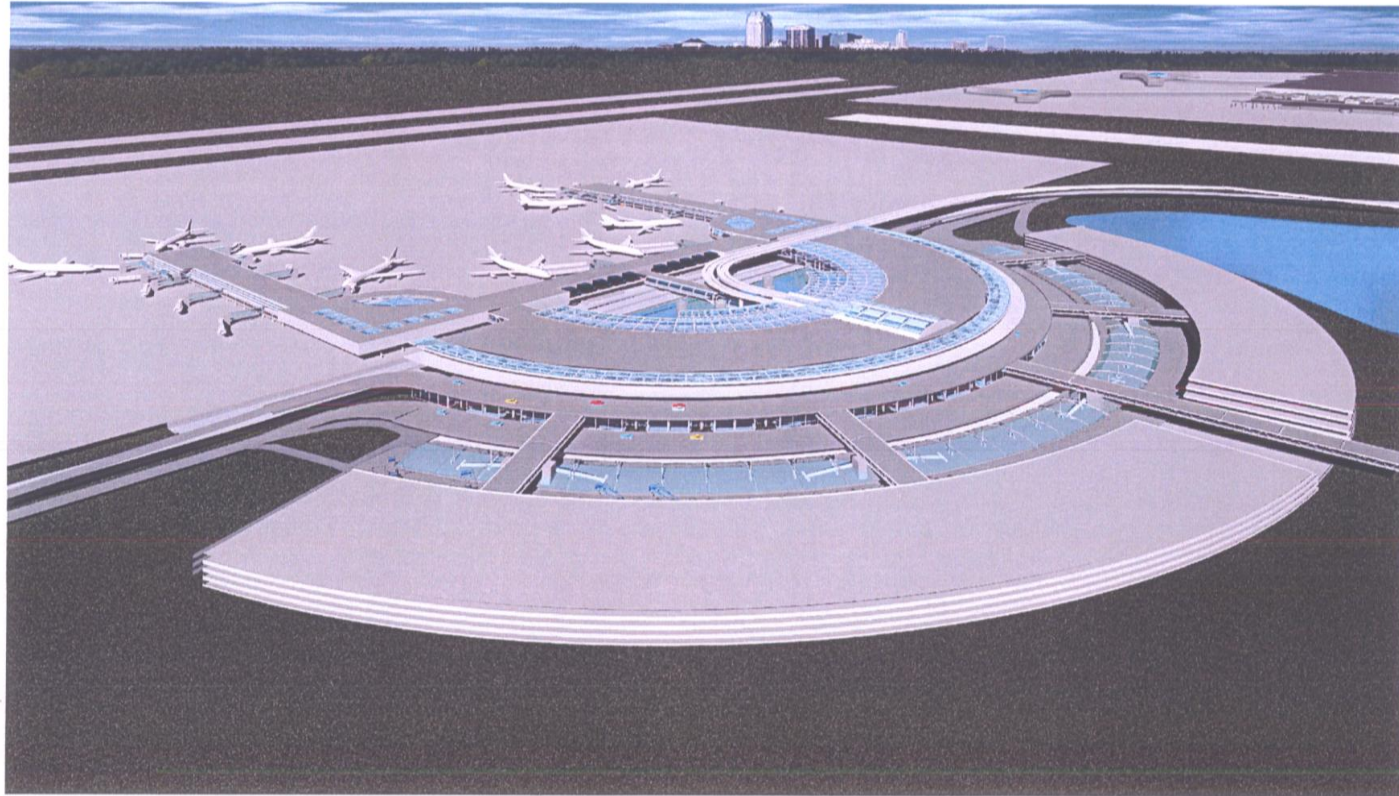
# Final Design – South Terminal



GREATER ORLANDO  
AVIATION AUTHORITY



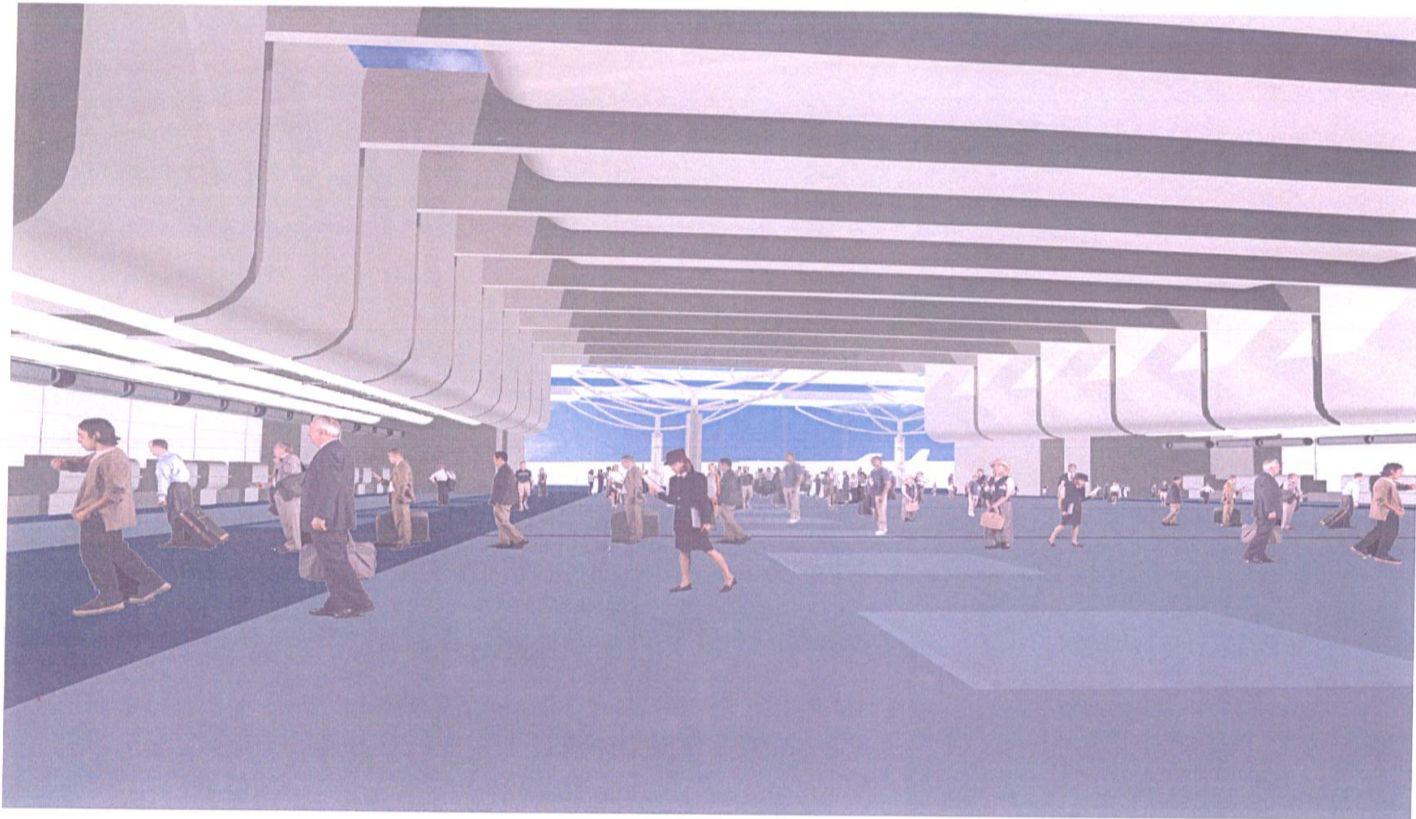
# South Terminal



*Bird's Eye View of 24 Connected Gates and  
Landside Building*



# South Terminal



*Ticketing Lobby*





# South Access Road Widening

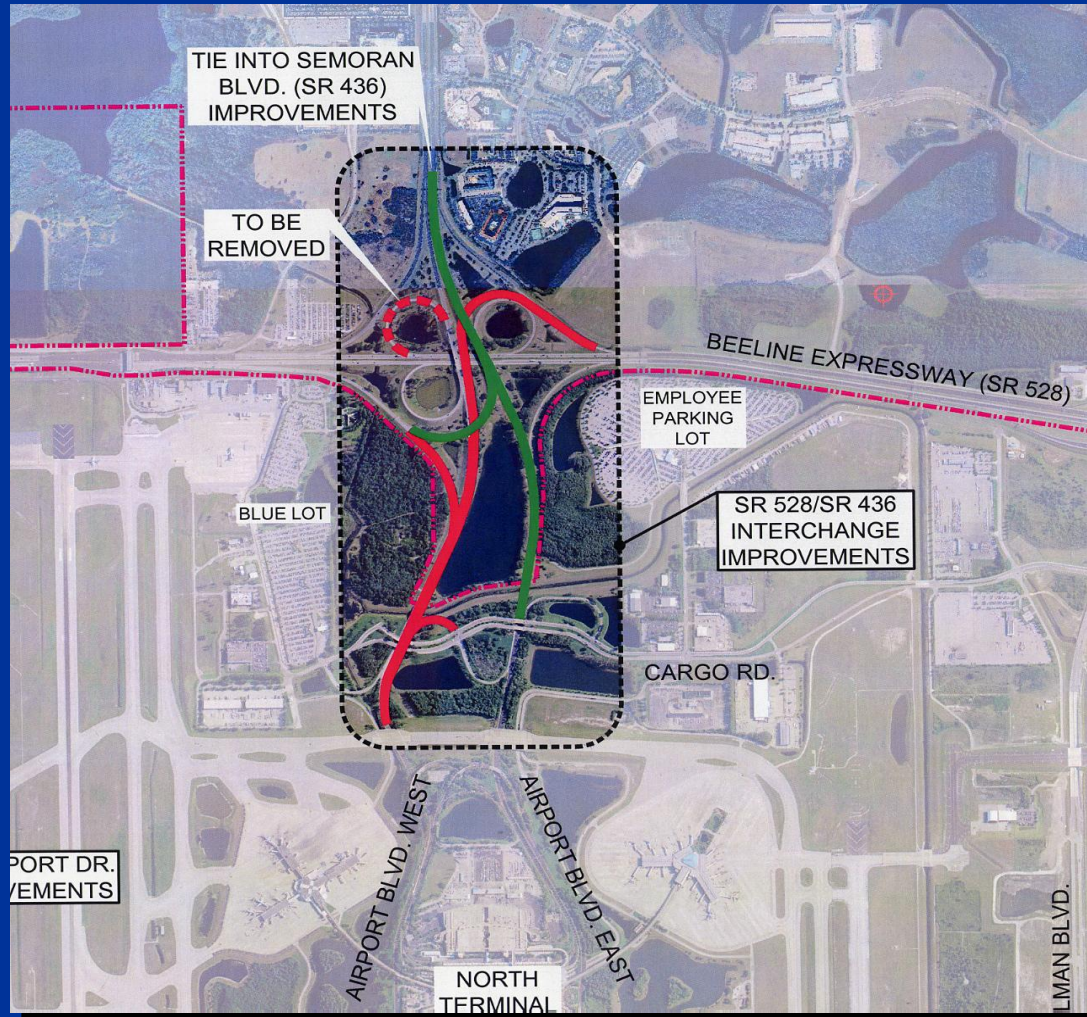


GREATER ORLANDO  
AVIATION AUTHORITY



# SR 436/SR 528 Interchange

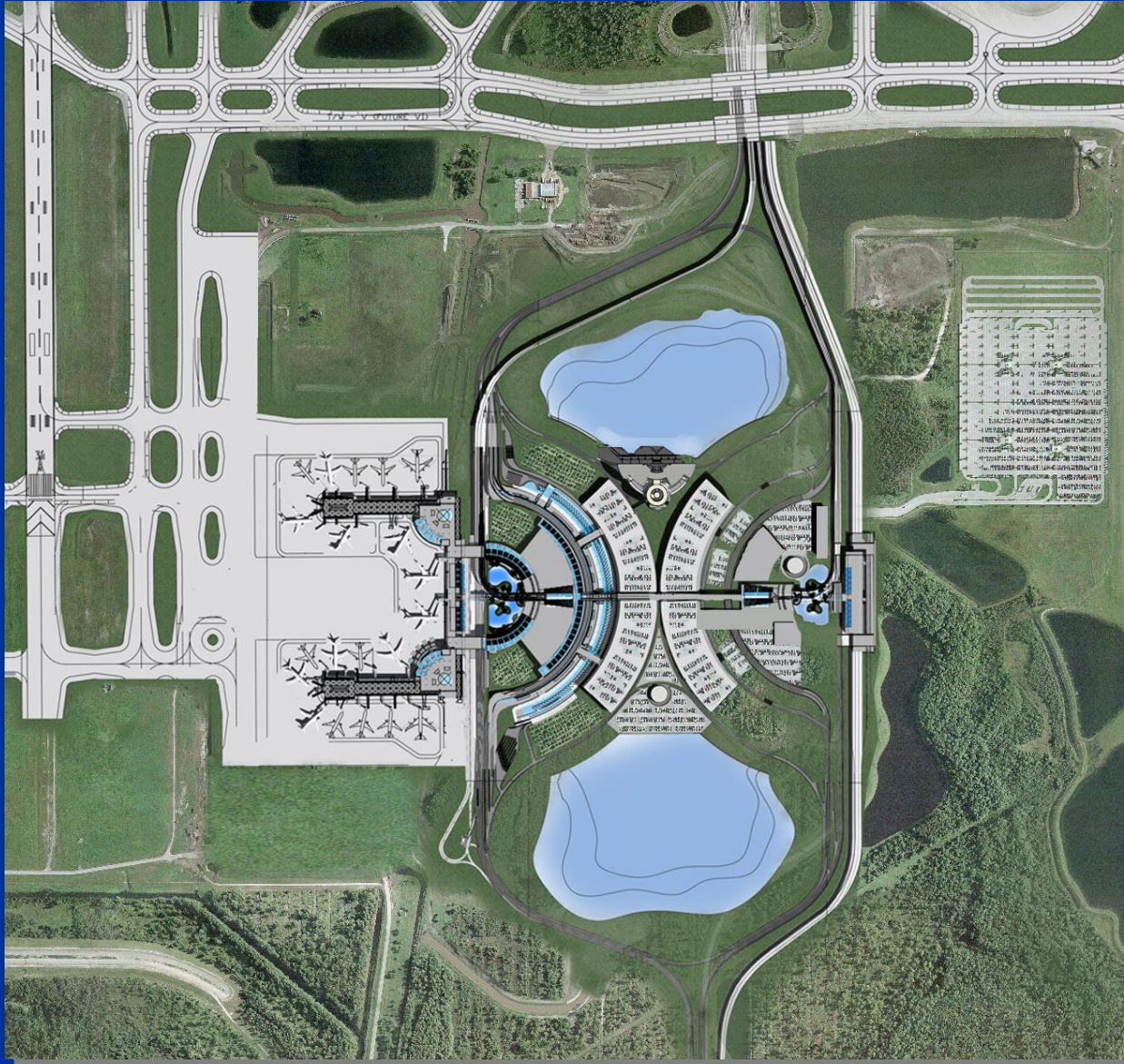
**OOCEA will Implement the Project**



**GREATER ORLANDO  
AVIATION AUTHORITY**



# Proposed Intermodal Facility



GREATER ORLANDO  
AVIATION AUTHORITY

**J.D. Power and Associates**  
**2004 Global Airport Satisfaction Index Study**  
**Top 10 Large Airport Ranking**  
(30 million passengers or more per year)

- 1- Hong Kong (HKG)**
- 2- Orlando (MCO)**
- 3- Denver (DEN)**
- 4- Dallas/Fort Worth (DFW)**
- 5- Frankfurt (FRA)**
- 6- Minneapolis-St. Paul (MSP)**
- 7- Phoenix (PHX)**
- 8- Amsterdam Schiphol (AMS)**
- 9- Las Vegas (LAS)**
- 10- Houston-Intercontinental (IAH)**

Source: J.D. Power and Assoc. December 6, 2004 press release



