

Update to the Florida Transportation Commission

**Husein Cumber, Executive Vice President – Corporate Development
Florida East Coast Industries**

Thursday, July 25, 2013



ALL ABOARD FLORIDA WILL CONNECT PEOPLE, PLACES AND BUSINESSES

19M+ POPULATION

42% OF THE STATE'S
POP RESIDES
ALONG THE
CORRIDOR

50M TRIPS BETWEEN
DESTINATIONS

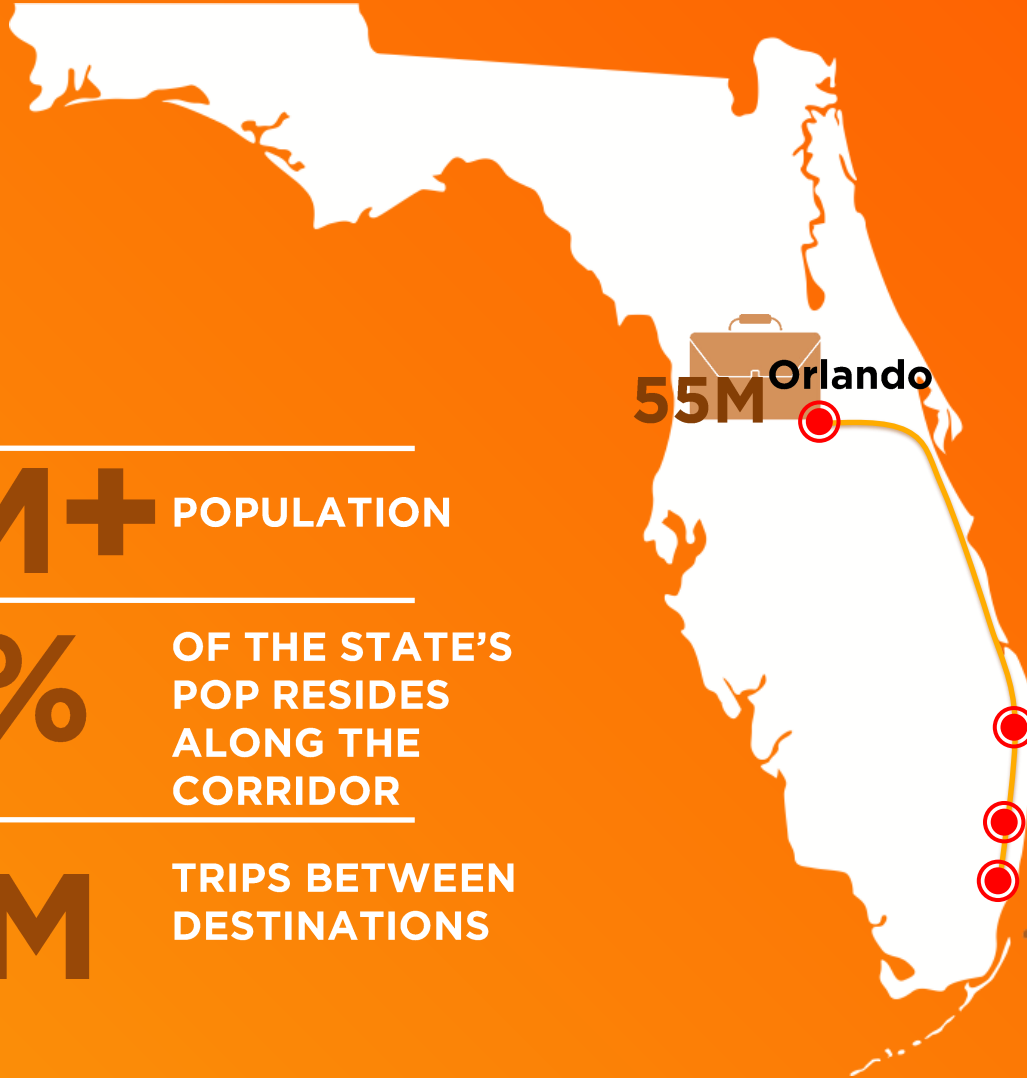
55M Orlando

West Palm Beach

Fort Lauderdale

Miami

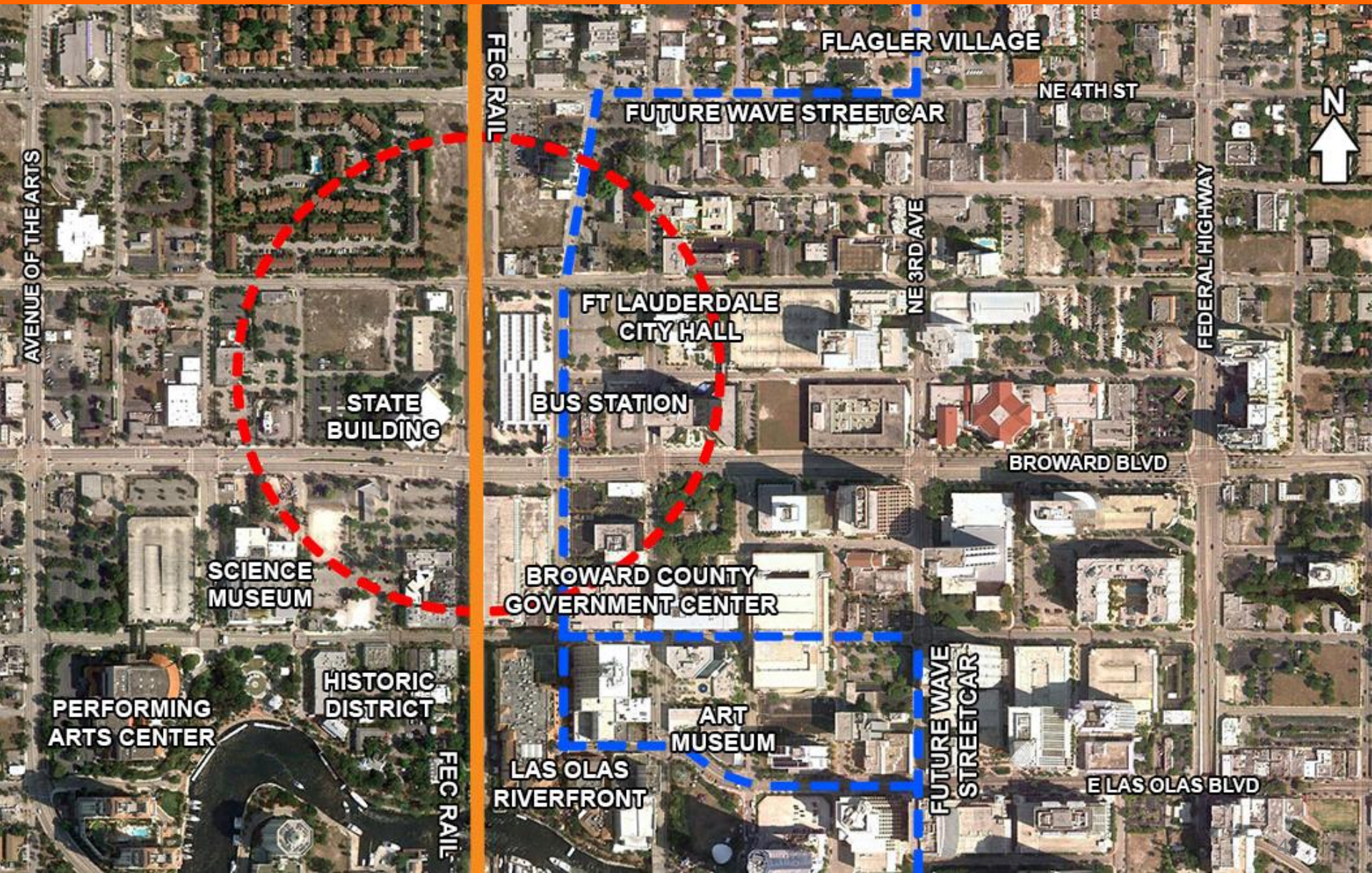
39M



MIAMI – TRANSFORMING DOWNTOWN

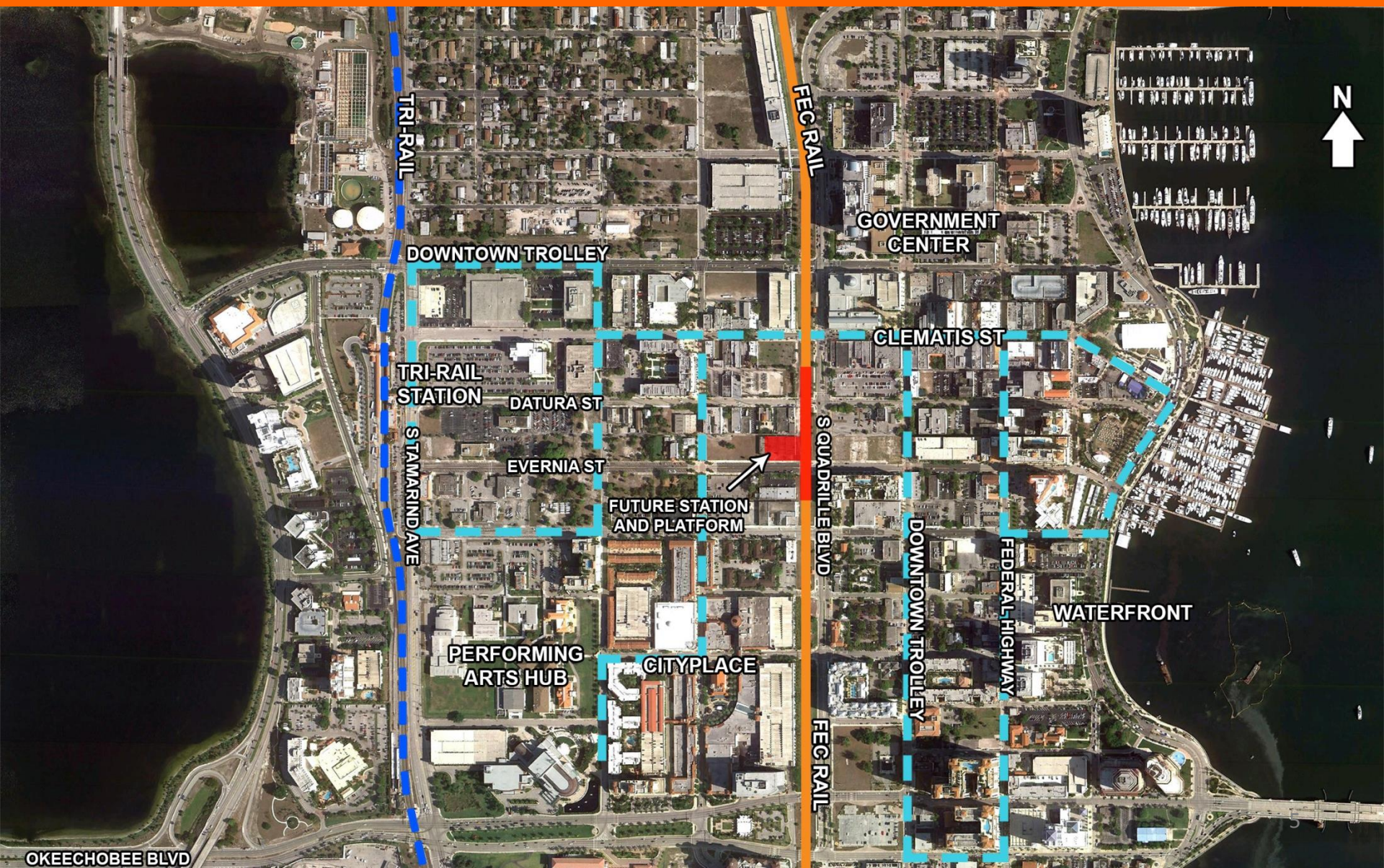


FORT LAUDERDALE- REVITALIZING NORTH OF BROWARD BOULEVARD

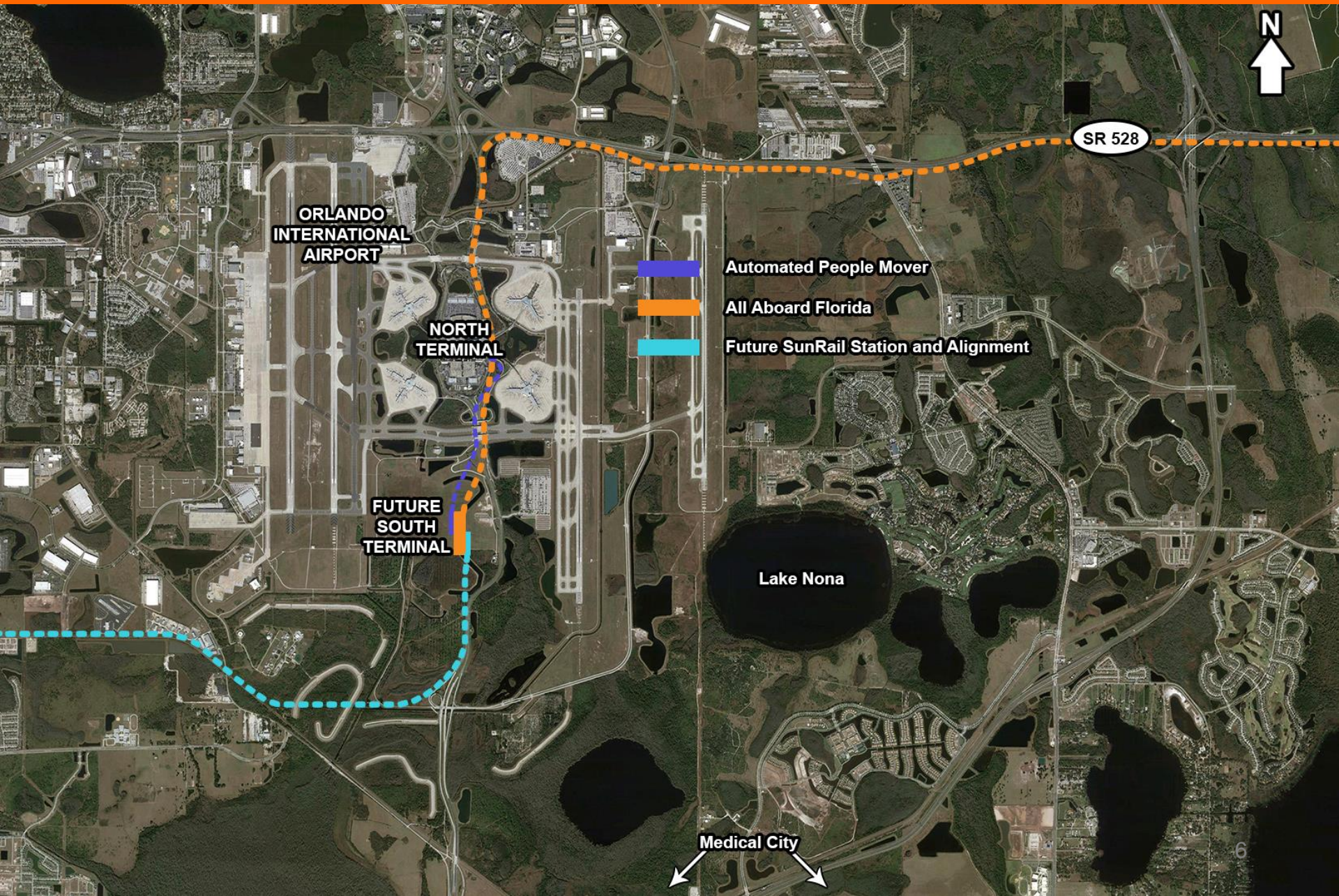


WEST PALM BEACH-

CONNECTING TWO MAJOR DOWNTOWN DESTINATIONS



ORLANDO - CREATING A NEW MULTIMODAL HUB



TREMENDOUS ECONOMIC IMPACT

\$1.5B+ investment by a private company will create more than...

45,000 new jobs from construction of system and stations

8,000 new jobs for the rail and station operations

MAJOR MILESTONES

- ✓ **Completed negotiations with FDOT for access to SR 528 right of way.**
- ✓ **AAF continues to explore option of moving rail line south into an expanded Orlando-Orange County Expressway Authority footprint**
- ✓ **Working with Greater Orlando Aviation Authority (GOAA) to finalize an agreement on leasing station in new intermodal facility, land for maintenance facility and rail corridor on GOAA property**
- ✓ **Awarding design packages for West Palm Beach to Miami segment in August/September**

SIGNIFICANT PROGRESS TO DATE

- ✓ **Briefed and presented to more than 300 elected officials, business organizations, civic groups, homeowners associations and state/county/municipal staff**
- ✓ **Conducted five public meetings/open houses along the corridor as part of the Environmental Impact Statement (EIS) process**
 - **Attended by more than 550 people**
 - **Overwhelming support expressed for the project**
- ✓ **Hosted two Disadvantaged/Minority/Women-owned Business Enterprise and veteran-owned forums for procurement opportunities**
 - **Attended by more than 300 firms**
 - **20 potential prime contractors participated to discuss teaming opportunities**

ENVIRONMENTAL WORK STREAMS

- **Florida Department of Environmental Protection**
- **South Florida Water Management District**
- **St. Johns River Water Management District**
- **U.S. Army Corps of Engineers**
- **U.S. Coast Guard**

NEXT STEPS

2013

- Advance engineering
- Select rolling stock provider
- Engage operating partner
- Finalize financing structure
- Begin construction on rail and station infrastructure

2014

- Launch new brand
- Complete design, engineering and EIS process
- Advance all construction activity on stations and rail infrastructure

2015

- Peak construction
- Begin testing
- Final construction and test

START REVENUE SERVICE!



www.allaboardflorida.com