



Husein Cumber, Executive Vice President – Corporate Development
Florida East Coast Industries

Florida Transportation Commission

May 8, 2013

TRANSFORMING FLORIDA



COMMERCIAL REAL ESTATE



LOGISTICS SOLUTIONS

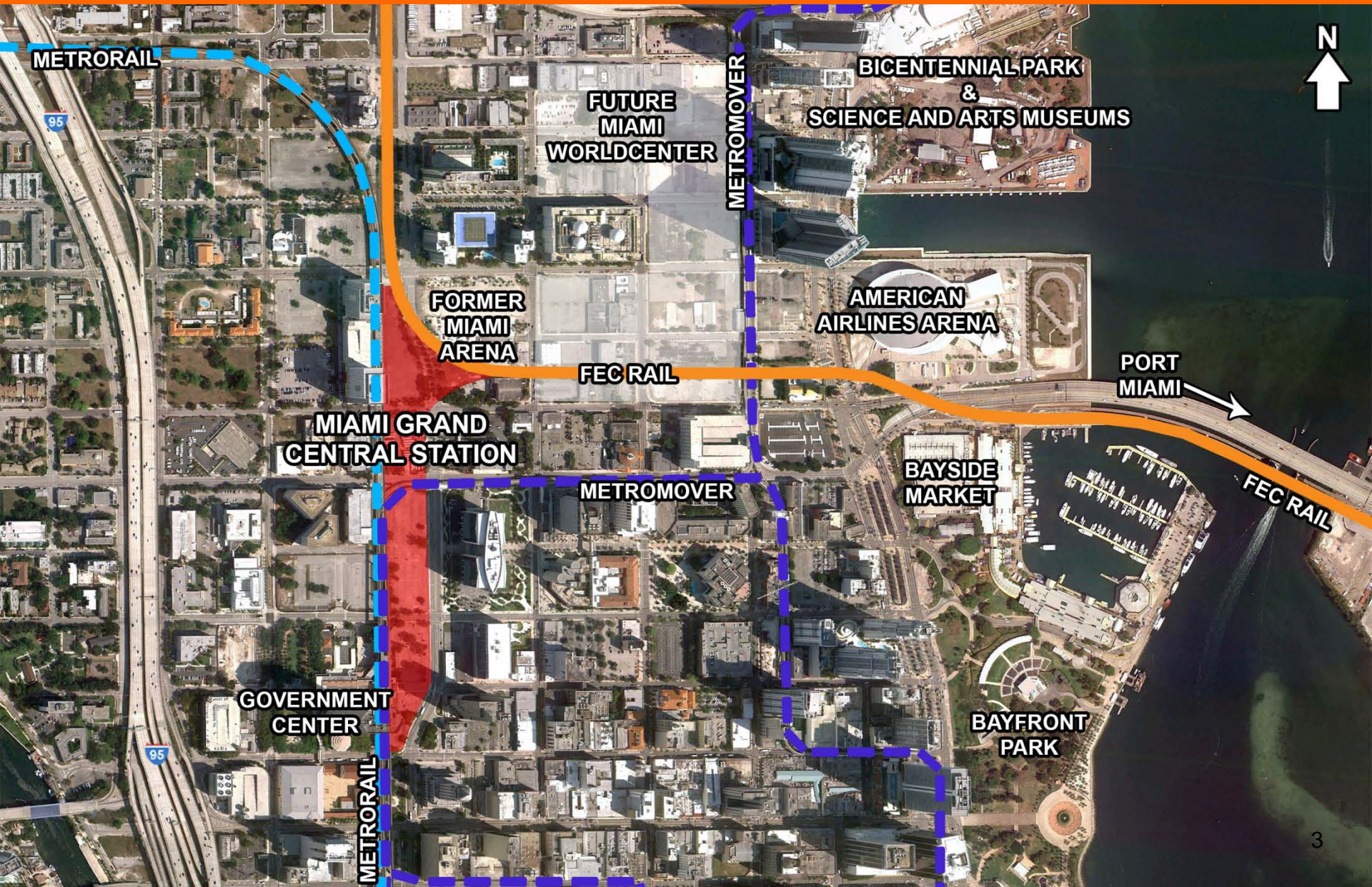


ROW MANAGEMENT

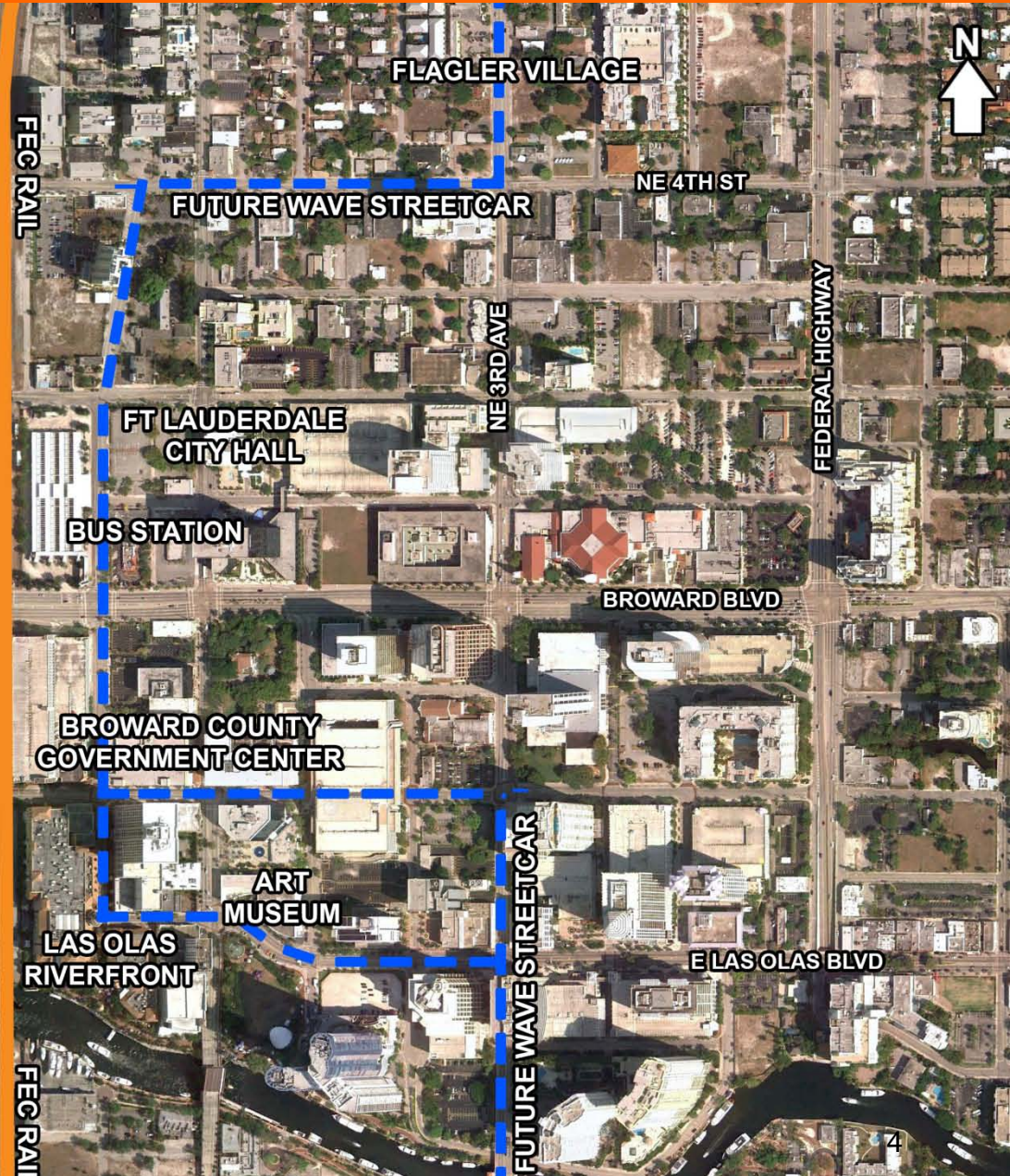
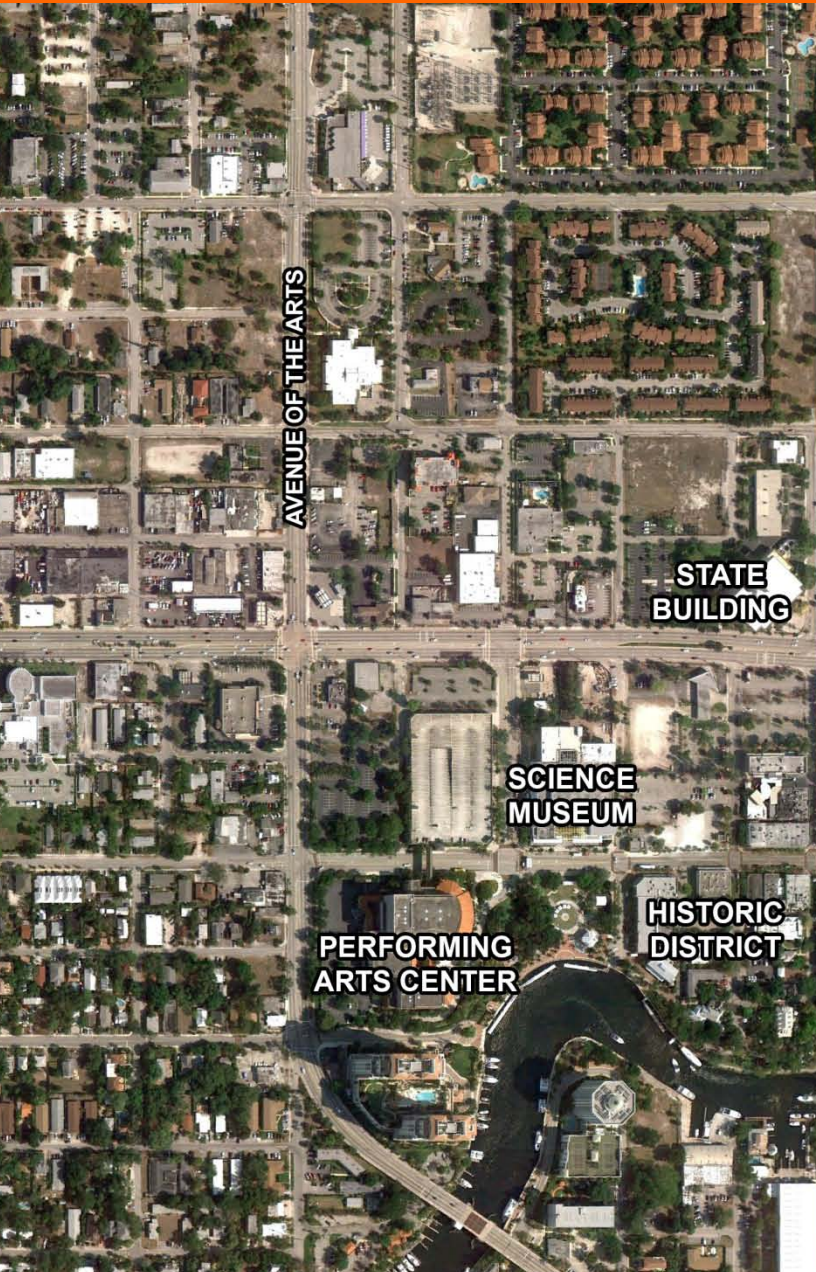


PASSENGER RAIL

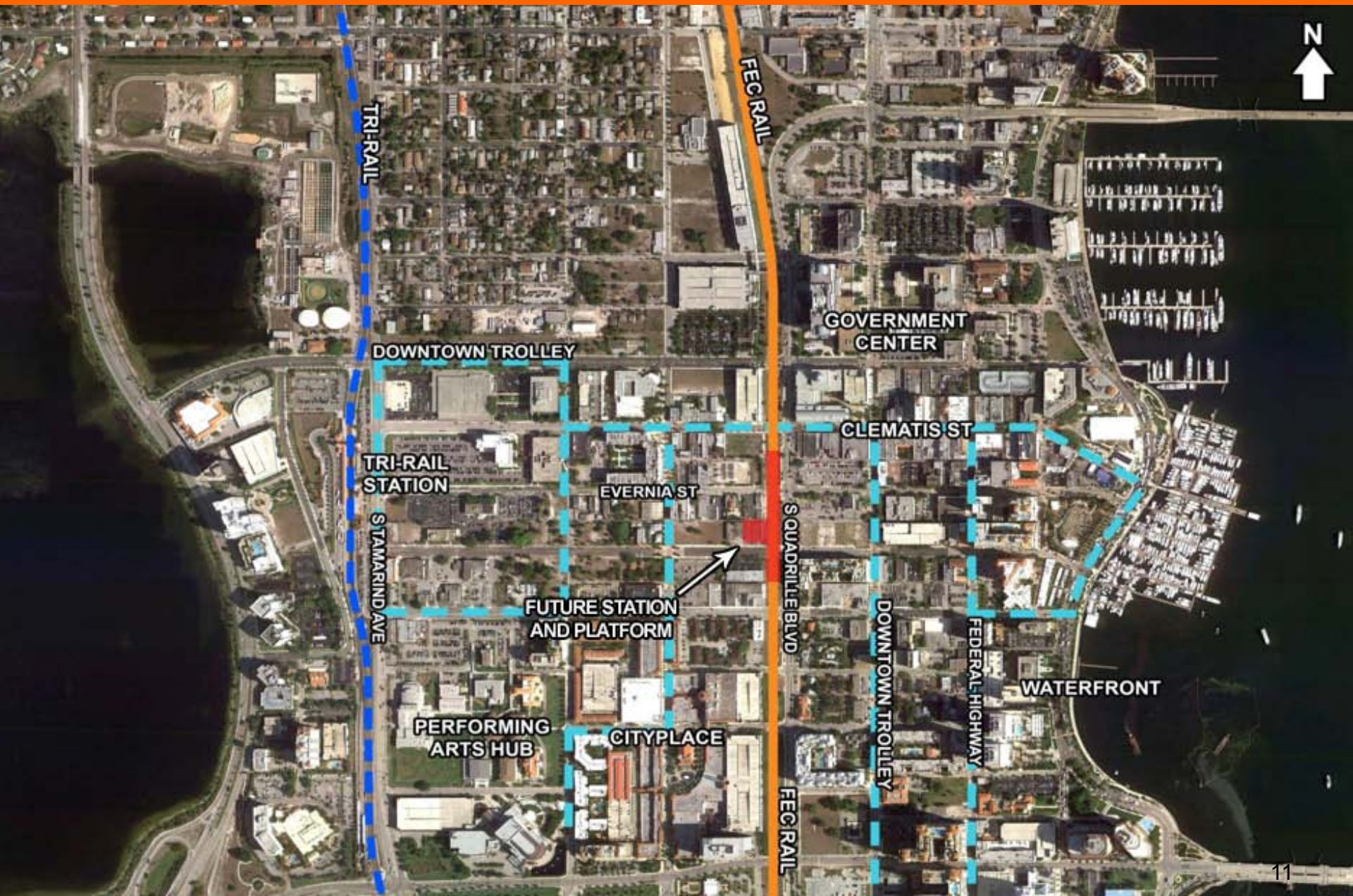
MIAMI



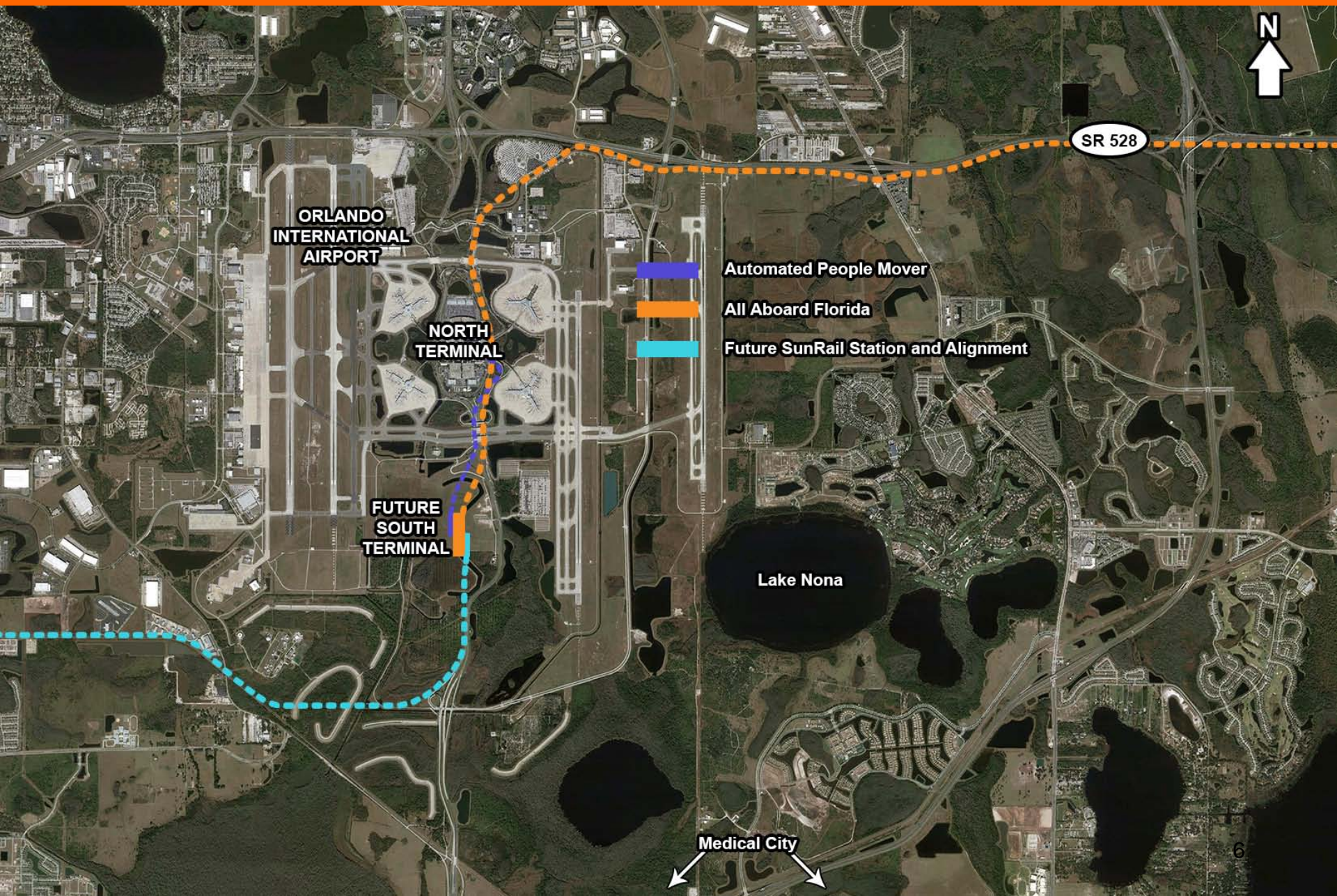
FORT LAUDERDALE



WEST PALM BEACH



ORLANDO



COMPLETED ACTIVITIES

- Finalized investment grade ridership study, engineering and environmental reviews
- Selected master planner and environmental engineering firms
- Announced West Palm Beach station location
- Completed Environmental Assessment for Miami to West Palm Beach segment and received Finding of No Significant Impact in January 2013
- Hired key leadership, President & Chief Operating Officer Don Robinson and President & Chief Development Officer Mike Reininger

MOVING FORWARD

- Environmental Impact Statement Process between Miami and Orlando project underway
 - Series of public scoping meetings held this month in Miami, West Palm Beach, Fort Pierce and Orlando
 - Meeting to be scheduled in Broward County
- Finalize negotiations with
 - Greater Orlando Aviation Authority
 - Orlando Orange County Expressway Authority
 - Florida Department of Transportation
- Determine financing structure, including RRIF loan
- More detailed engineering work – NTP to be given this month
- Continued coordination with counties and municipalities along corridor and extensive public outreach

MOVING FORWARD

- Finalize construction costs and Fort Lauderdale station location
- Announce new brand
- Select rolling stock provider
- Engage third party operating partners
- Negotiate construction contracts

OUTREACH & SUPPORT

Environmental Impact Statement Process

Comments can be postmarked or emailed by May 15 to

- Catherine Dobbs, Transportation Analyst
Office of Railroad Policy & Development, Federal Railroad Administration
1200 New Jersey Avenue, SE
Washington, D.C. 20590
- Catherine.dobbs@dot.gov

Florida Department of Transportation

- Fred Wise
Executive Director, Florida Rail Enterprise
850-414-4550 or fred.wise@dot.state.fl.us