

RIEGL

***3D Laser Technology
Brings Innovation and
Efficiency to Help Clear
Crash Scenes Faster***

Presentation to:
Florida Transportation Commission

December 6, 2017

***Shannon Trammell
Forensic LiDAR Specialist
RIEGL USA***



Brief Recap of FTC Presentation July 20, 2017

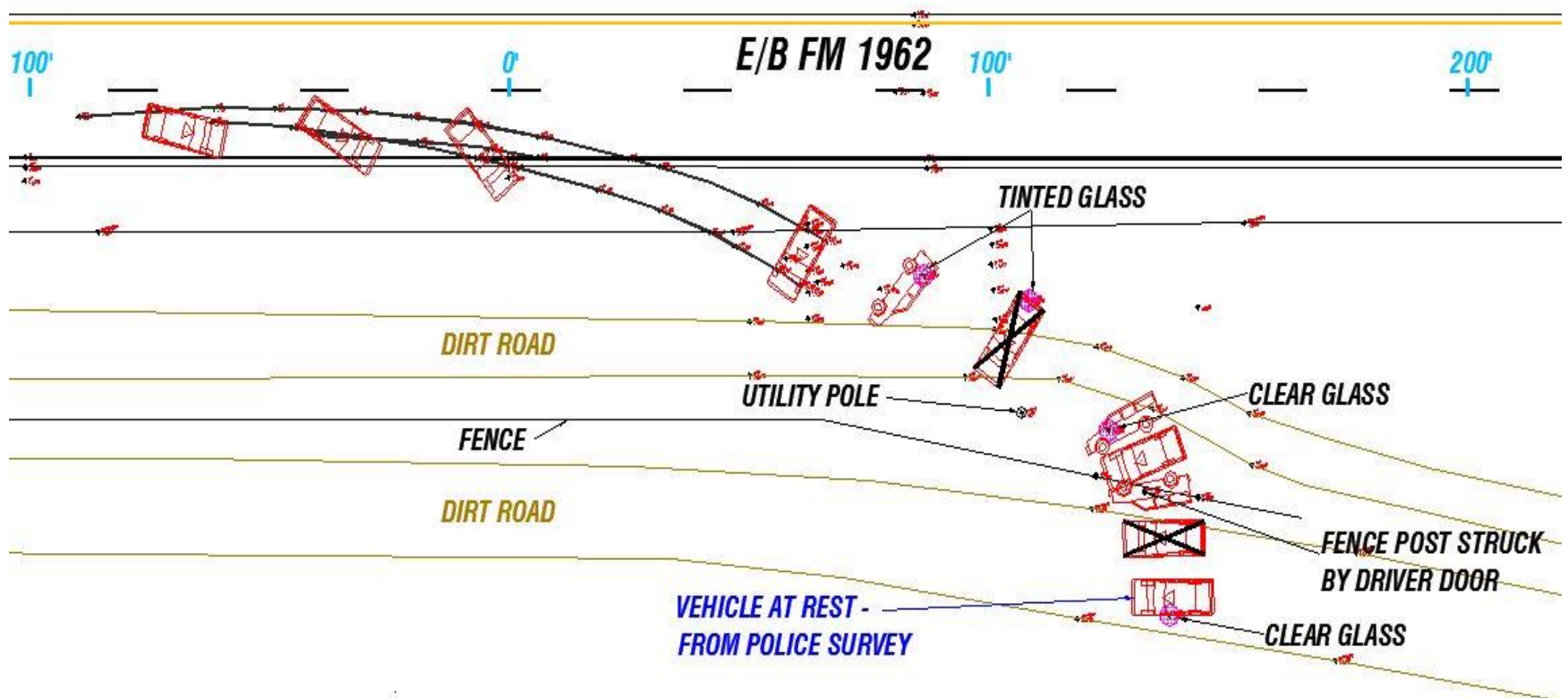
IN CRASHES WHERE THERE IS A FATALITY –

LANES MUST BE CLOSED AND THE SCENE MUST BE DOCUMENTED



IN CRASHES WHERE THERE IS A FATALITY –

LANES MUST BE CLOSED AND THE SCENE MUST BE DOCUMENTED



2016 Total Crash Reports - Florida

Crash Summary

Total Crashes: 395,521

Injury Crashes: 165,980

Crashes with Traffic Fatalities: 2,946

Total Traffic Fatalities 3,191

Commercial Vehicle Crashes: 41,086

Commercial Vehicles: 44,317

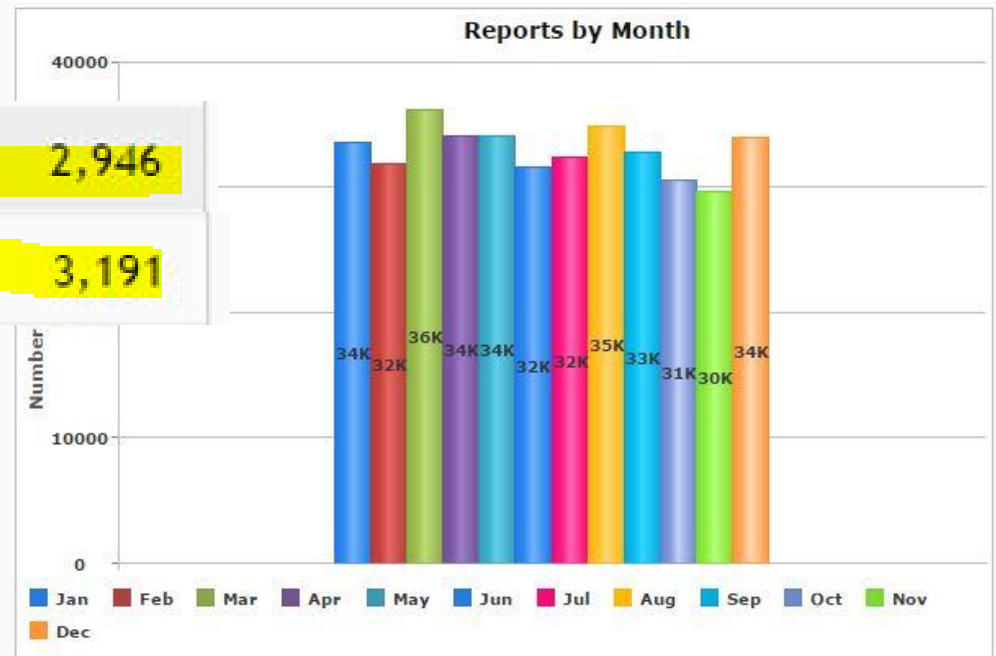
Property Damage Crashes: 226,595

*Pedestrian Crashes: 9,097

*Pedestrian Fatalities: 650

**Bicycle Crashes: 6,667

**Bicycle Fatalities: 141



Total Crashes By Month

Crash Summary

Total Crashes:	346,326
Injury Crashes:	143,981
Total Injuries:	219,420

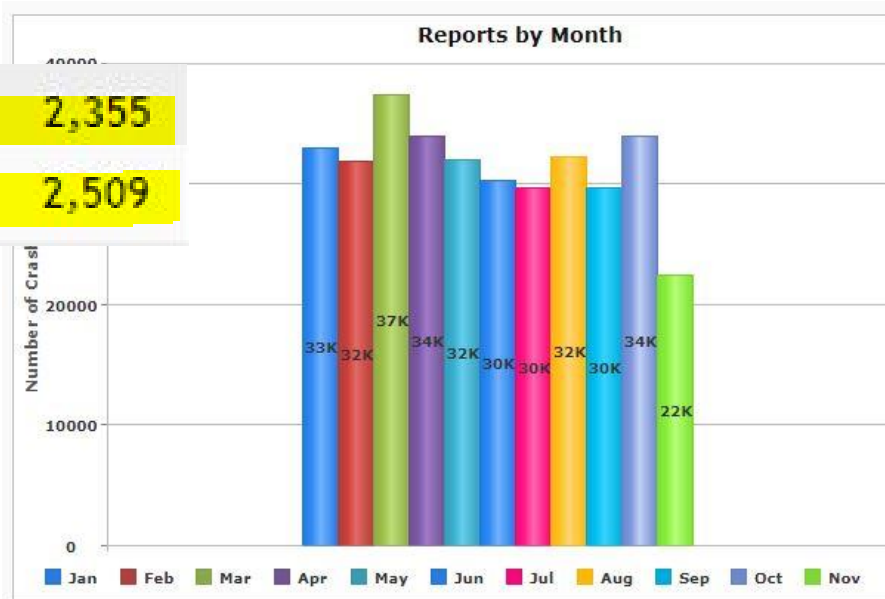
Crashes with Traffic Fatalities: 2,355

Total Traffic Fatalities 2,509

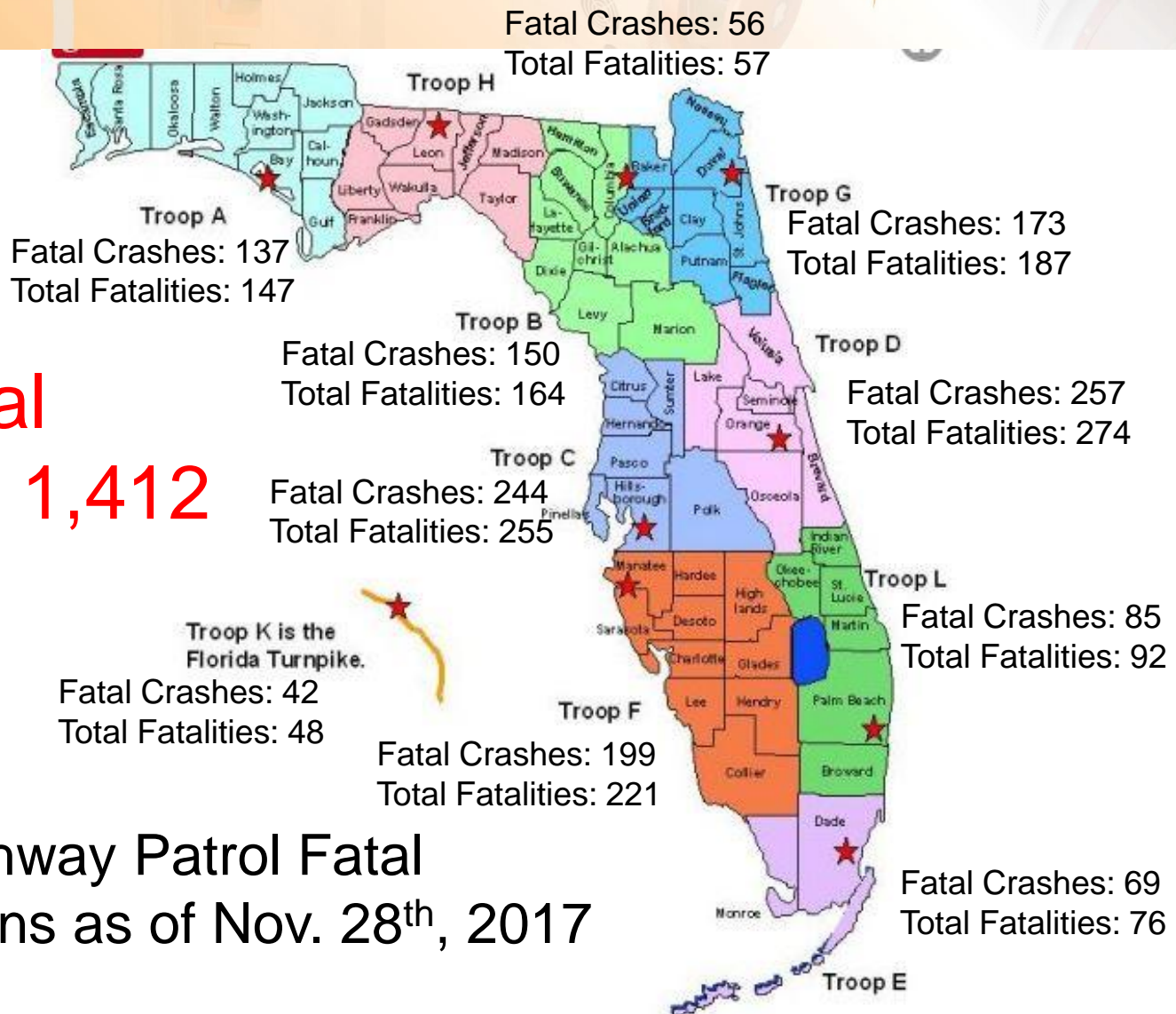
Commercial Vehicle Crashes:	37,674
Commercial Vehicles:	40,673
Property Damage Crashes:	199,990
*Pedestrian Crashes:	7,865
*Pedestrian Fatalities:	523
**Bicycle Crashes:	5,795
**Bicycle Fatalities:	92

As of Date: 11/28/2017

2017 Total Crash Reports – Florida



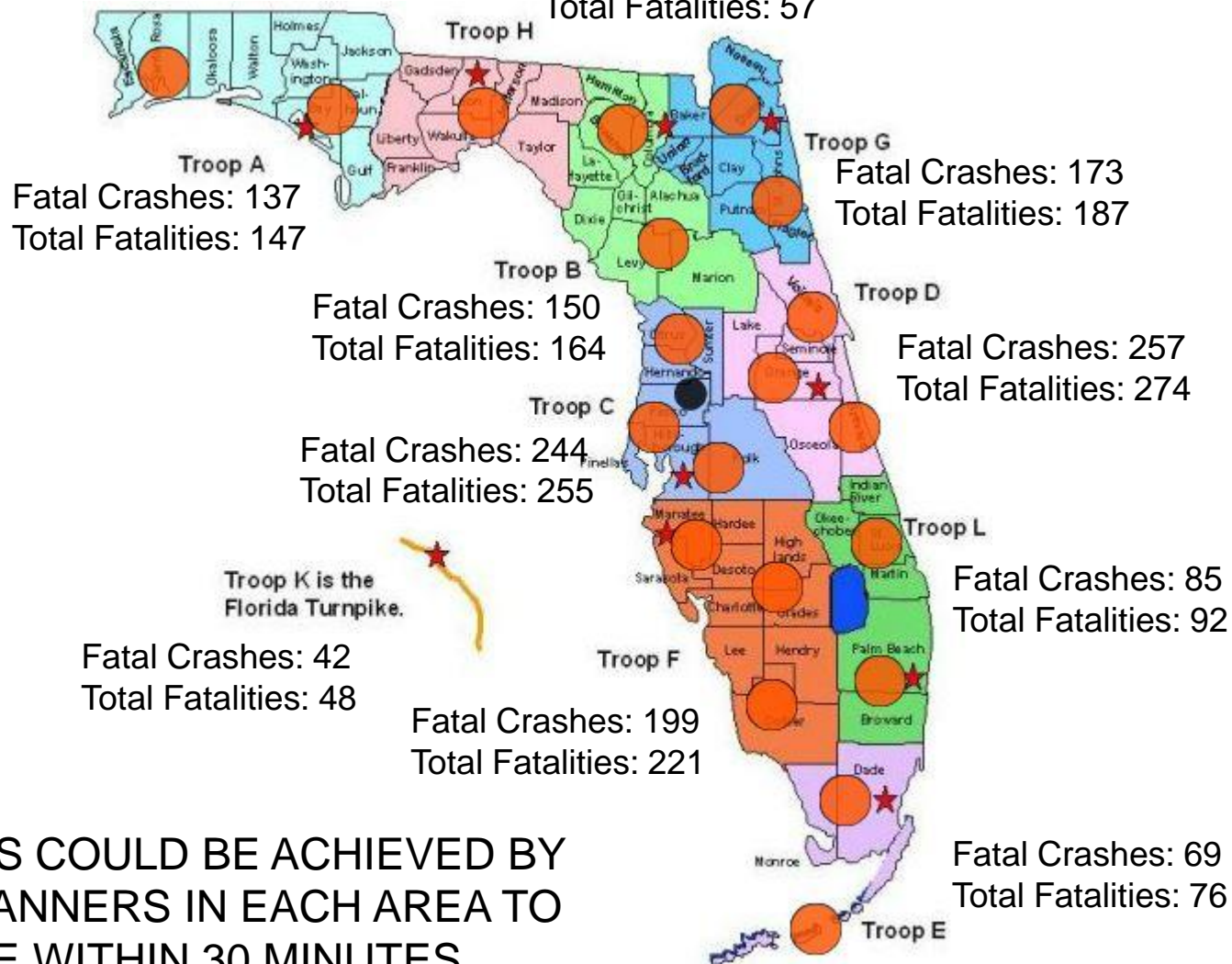
Total Crashes By Month



Florida Highway Patrol Fatal
Investigations as of Nov. 28th, 2017
by Troop

Fatal Crashes: 56

Total Fatalities: 57



**EFFICIENCIES COULD BE ACHIEVED BY
STAGING SCANNERS IN EACH AREA TO
BE ON SCENE WITHIN 30 MINUTES**

Evolution of Crash Reconstruction Technology



Measuring Tape



Total Station

1960

1970

1980

1990

2000

2010

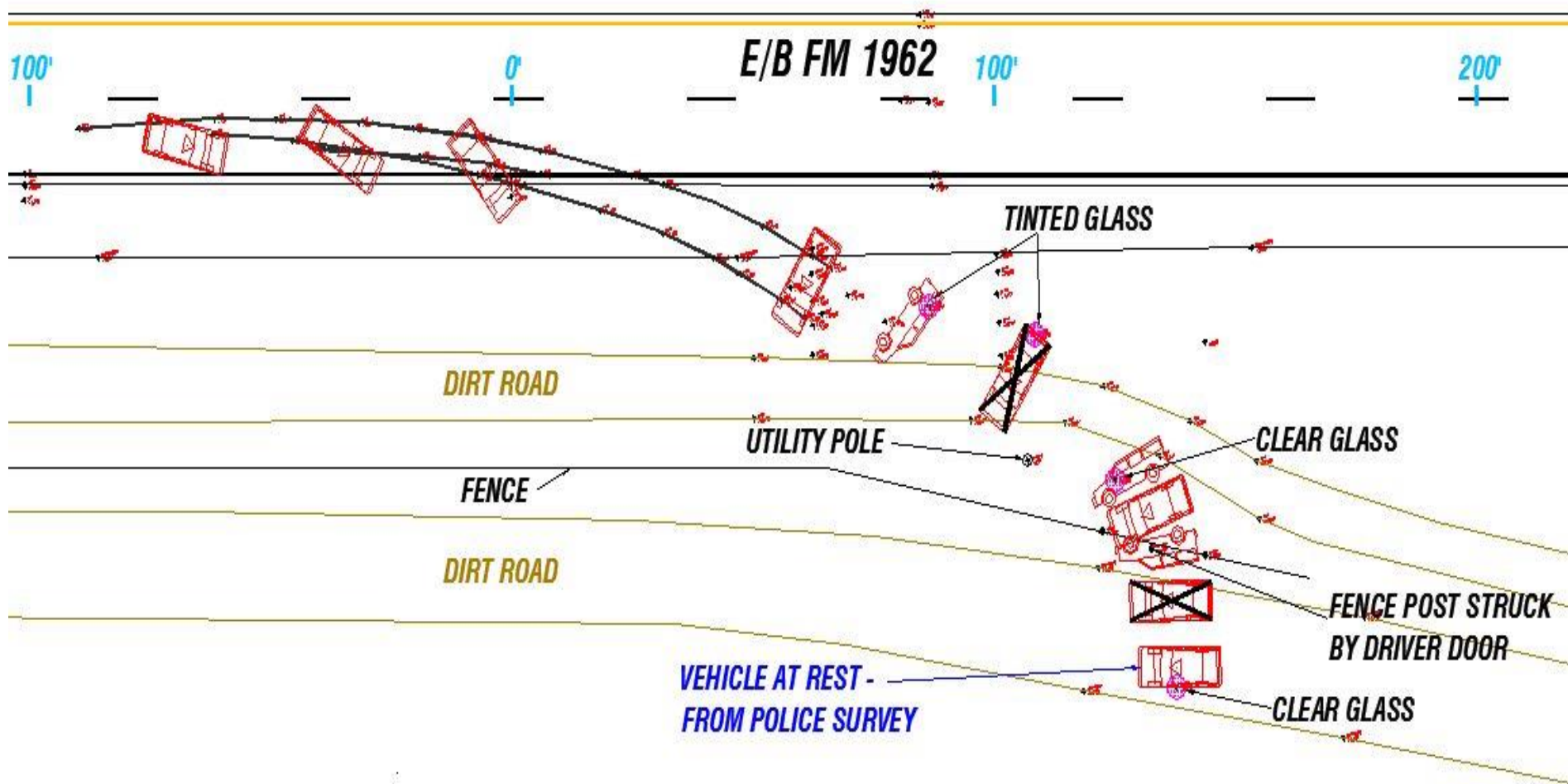
2020

Roller Wheel



RIEGL Laser Scanners





Innovation in 3D



What Makes This Technology So Important?

- Restores traffic flow 5 times faster than Total Station
- Accurately documents the scene in any light or weather condition
- Reduces secondary crashes
- Requires one operator, rather than two
- Improves investigation in the weeks and months after a crash and is an excellent, court admissible tool

Innovation in 3D



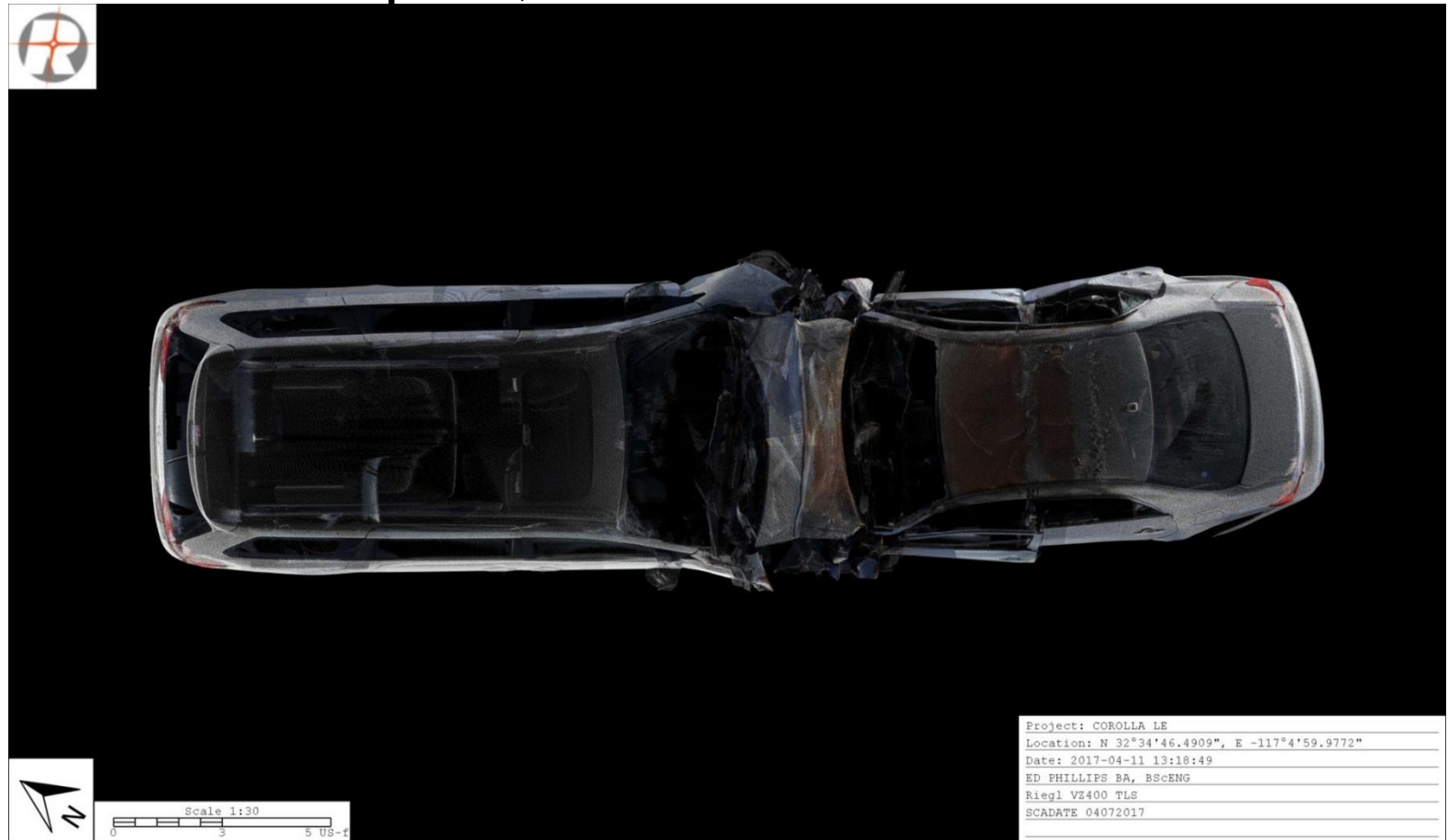
New Information

Innovation in 3D



RIEGL's Forensic Scanning Package is being used around the world!

The scans allow teams to recreate the point of impact, as well as at rest



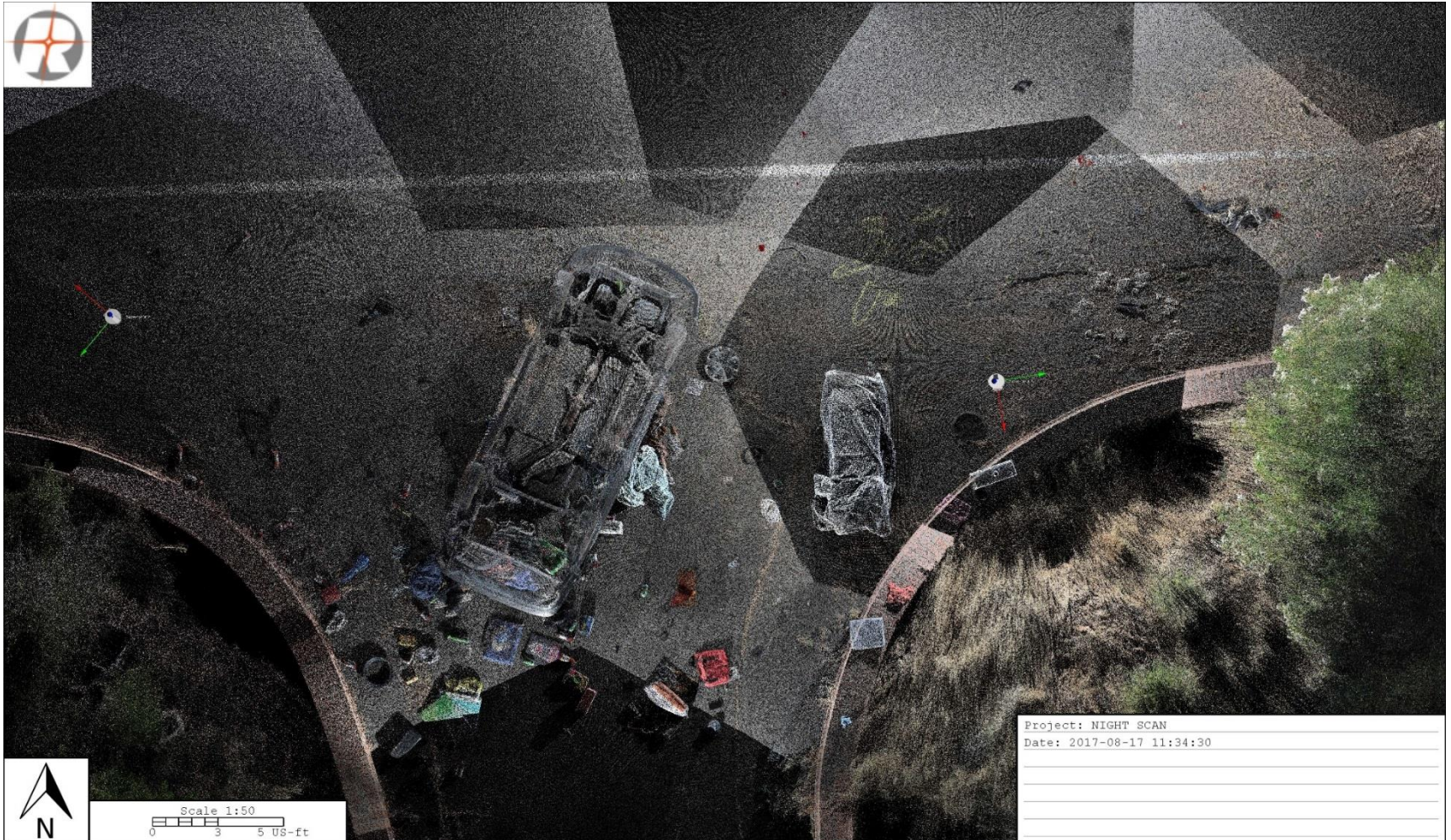
LiDAR scans allow users to better see beginning and end of skid marks for accurate speed estimates



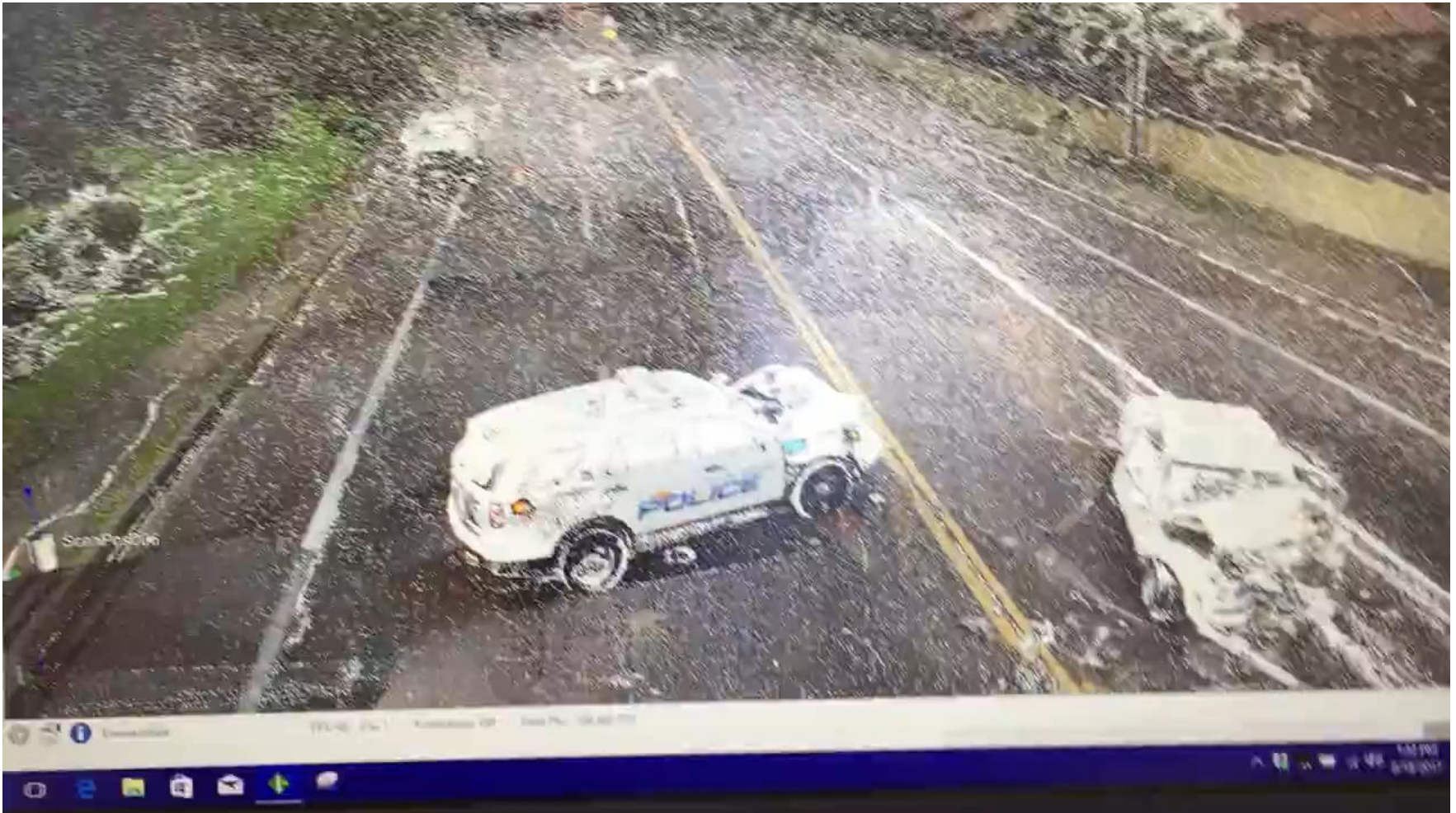
LiDAR scans allow users to better see beginning and end of skid marks for accurate speed estimates



Rural Area, No Artificial Lighting Other Than Camera Flash



Florida rain presents no problem or effect in scanning



Pilot Project Updates

- CFX/FHP compared all top models and RIEGL came in #1
- Actual pilot started November 2016
- Used in well over 200 crashes so far (Orange, Osceola & Lake Counties only – a couple of Seminole and Volusia cases)
- Parameters – Side by side comparison of old vs. new method on scene. FHP abandoned old method after only one month of using the *RIEGL* system
- Other troops have expressed great interest

Recent Crash – Case Study



- Total Station started 25 minutes before RIEGL arrived.
- RIEGL scan took 25 minutes
- Total Station was finished an hour after the RIEGL
- Total time saved using RIEGL = 1 hour 25 minutes

Lessons Learned

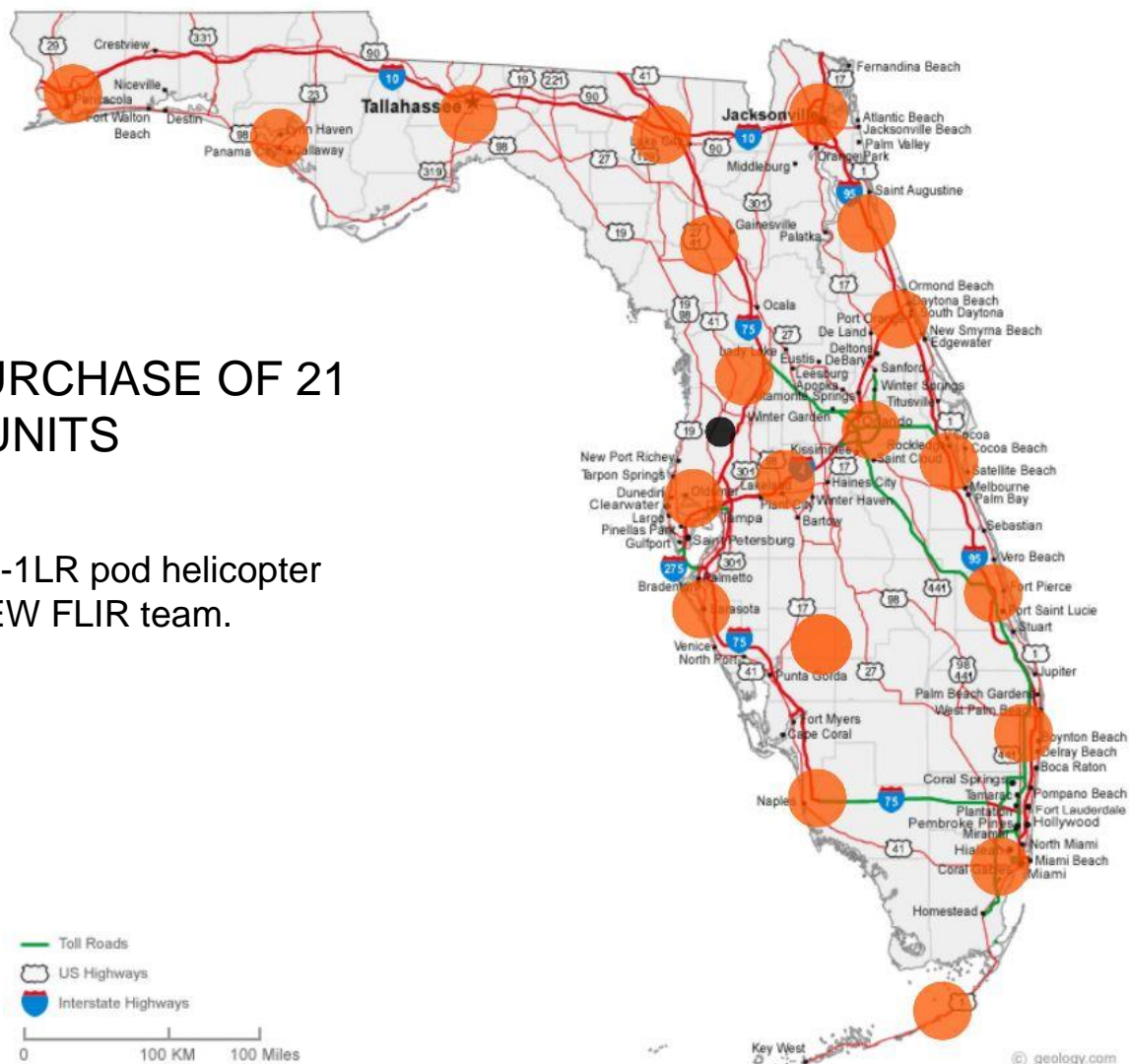
- FHP now contact Medical Examiner (ME) as they arrive on scene instead of after their measurements are completed with the Total Station
- Scans are usually well completed by the time the ME arrives on the scene

Retired Captain Herrell

I watched your equipment become a game changer for us, and is an essential tool to properly document fatal crash scenes quickly and accurately. The scanning occurs in a fraction of the time we used to require, and is performed by only one Corporal; in any weather condition – day or night! This frees up one or two other Corporal's to handle other aspects of the investigation, and aids in ultimately being able to reopen roadways faster. Your equipment has really helped us do our job faster, safer and with the highest professionalism.

WE RECOMMEND THE PURCHASE OF 21 RIEGL VZ-400i UNITS

Consider the purchase of a VUX-1LR pod helicopter
mounted system for the NEW FLIR team.



System Roll Out

- RIEGL USA is prepared to begin rollout for delivery and training in January 2018
- Full statewide implementation in less than six months!

Why RIEGL?

- Automated instrument AND software
- Simplicity and ease of use
- Superior technology suited for use in the elements
- The most reliable
- THE FASTEST on the market
- Outstanding personal customer support
- Software that is valid indefinitely
- Service on instrument done right here in FLORIDA

Thank You!

For more information, please contact us



Shannon Trammell

strammell@rieglusa.com

Website: www.rieglusa.com

O: 407-248-9927 C: 321-474-2518



Innovation in 3D